



Rhode Island Department of Children, Youth & Families



Picture Source: KVC Health Systems <http://www.kvc.org/>

Community Based Services

July 1, 2014 – November 30, 2015 Entry Cohort

(July 1, 2012 – June 30, 2014 Entry Cohort for Visitation Program)

Data and Evaluation

October 2016

Table of Contents

Introduction	1
Children, youth and caregivers receiving selected RI DCYF funded community based services	2
Community based services: Placement types and population characteristics	4
Selected 6-month outcomes of children and youth who started a community based service from in-home between 7/1/14 – 11/30/15	6
Disproportionality in selected 6-month outcomes of children and youth who started a community based service from in-home between 7/1/14 – 11/30/15	7
Survival analysis on selected 6-month outcomes of children and youth who started a community based service from in-home between 7/1/14 – 11/30/15	8
Selected 6-month outcomes of children and youth who started a community based service from out-of-home between 7/1/14 – 11/30/15	10
Most frequently used services and new services	11
Enhanced Family Support Services (EFSS)	11
Preserving Family Networks (PFN)	13
Multisystemic Therapy (MST)	15
Outreach and Tracking (O&T)	17
Trauma Systems Therapy (TST)	19
Family Preservation (FP)	21
Teen Assertive Community Treatment (Teen Act)	23
Family Centered Treatment (FCT)	25
Positive Parenting Program (Triple P)	27
Community Based Services – Visitation Center (July 1, 2012 – June 30, 2014)	29
Appendix	31
Table 1. Number and percent of youth and caregivers who started at least one type of community based services through RI DCYF between 7/1/14-11/30/15, by service type and age	31
Table 2. Selected outcomes of youth who started a community based service from in-home between 7/1/14-11/30/15, by service type, age and selected outcomes	32
Table 3. Median length of time (Days) from the start of a service and selected 6-month outcomes for youth who started a community based service from in-home between 7/1/14-11/30/15, by service type and age	33
Table 4. Number, percent and median length of time (Days) between start of a service and discharge from all out-of-home placements among youth discharged within 6 months of starting a service from out-of-home between 7/1/14-11/30/15, by service type and age	34

This report, Community Based Services (July 1, 2014 – November 30, 2015 Entry Cohort), was produced by the Rhode Island Department of Children, Youth and Families' Data and Evaluation Unit. If you have questions or require additional information about this report, please contact Colleen Caron, RI DCYF Data and Evaluation Unit Director and Epidemiologist, at Colleen.Caron@dcyf.ri.gov, or Kyeonghee Kim, RI DCYF epidemiologist, at Kyeonghee.Kim@dcyf.ri.gov.

RI Department of Children, Youth and Families (RI DCYF)
Community Based Services
July 1, 2014 – November 30, 2015 Entry Cohort
(July 1, 2012 – June 30, 2014 Entry Cohort for Visitation Program)

Introduction

The Rhode Island Department of Children, Youth and Families (RI DCYF) in collaboration with community providers offer various community based services as part of early efforts to preserve families caring for their children and youth as well as to promote their overall well-being. The primary purpose of this report is to provide a preliminary surveillance on the profile of children, youth and families receiving **RI DCYF funded community based services during July 1, 2014 through June 30, 2015. Children, youth and families may have received additional services paid through other funding sources (i.e. managed Medicaid, Medicaid, private insurance) not captured in this report during this same time period.** This information can assist RI's Child Welfare System of Care in service array planning to meet the needs of children and families. Most of the community based services funded by RI DCYF were administered in collaboration with and as part of their SOC FCN implemented in State Fiscal Year 2013 (FY13). The data presented in this report are limited to DCYF funded services only. Children and caregivers who may have received other services funded through alternate means are not included in this report.

Between July 1, 2014 and November 30, 2015, 1521 youth and 260 caregivers (a duplicated count by service type) entered at least one type of 16 different DCYF funded community based services, excluding Visitation Center which is presented in its own separate section. The end date of November 2015, rather than a complete fiscal year, was selected to allow for a 6-month follow up for all children and families. March 2016 began a new process for recording community based programs and for that reason and a slight lag in the data management process, November 30, 2015 was selected as an end date. Entry into one of the community based programs is defined as no previous enrollment in that particular program for at least 3 months or greater. This parameter was selected due to the nature in which the data is collected, fiscal data submission processes and could potentially yield limitations in the entry definition. As the primary purpose of this preliminary surveillance report is for community based service array utilization during July 1, 2014 through June 30, 2015 and initial data on selected outcomes, this report does not include dosage analysis on outcomes. Fifteen youth who started a service while in RITS or psychiatric hospital and 4 youth who received Family Therapy, Restorative Justice or Enrichment Program are excluded from this report due to small numbers.

Children and youth in-home – selected outcomes

This report mainly focuses on 965 entry cohort of children and youth between ages 0 and 21 who are involved with DCYF's child welfare, behavioral health and/or juvenile justice and started at least one type of DCYF funded community based services from an in-home placement between July 1, 2014 and November 30, 2015. From a surveillance (descriptive) framework, these youth were then followed for 6 months from the start of their services to see if they experienced any of these selected outcomes consistent with the program objectives within the given period: 1) removals from home, 2) Child Protective Services (CPS) investigation, 3) indication of maltreatment, 4) stay at Rhode Island Training School (RITS) and/or 5) adjudication in the juvenile justice system.

Children and youth out-of-home – selected outcomes

The report also includes an analysis on 556 entry cohort of children and youth between age 0 and 21 who are involved with DCYF's child welfare, behavioral health and/or juvenile justice and started at least one type of DCYF funded community based services from an out-of-home placement between July 1, 2014 and November 30, 2015. From a surveillance (descriptive) framework, these youth were then followed for 6 months from the start of their services to see if they discharged from all out-of-home placements.

Children and youth out-of-home receiving Visitation Center – selected outcomes

There are 131 entry cohort of children who started Visitation Center service in FY13-FY14. They are analyzed separately as Visitation Center specifically serves younger children already in out-of-home placements to support successful reunification with their parents. Children in Visitation Center service were followed for 12 months from the service start date to see if they reunified with their parents after receiving the service. Then, among those who reunified within 12 months of starting visitation service were followed for another 6 months from the date of their reunification to see if they experienced any of these selected outcomes within the given period: 1) subsequent removals from home, 2) Child Protective Services (CPS) investigation, 3) indication of maltreatment, 4) stay at Rhode Island Training School (RITS) and/or 5) adjudication.

Children, youth and caregivers receiving selected RI DCYF funded community based services

Between July 1, 2014 and November 30, 2015, there was a total of 1,781 children, youth and caregivers who received RI DCYF funded community based services through RI DCYF community providers and partners. The aim of these services is to preserve families, maintain safety and promote overall family well-being. The largest proportion of those receiving services were with youth age 18 and younger, 1,471 youth, followed by caregivers age 18 and older, 260 caregivers, and then youth age 18-21, 50 youth (See Table 1). Table 1 excludes children and youth who received Visitation Center as this program specifically serves younger children already in out-of-home placements to support successful reunification with their parents. Please see page 25 of this report for details on children in Visitation Center.

Table 1. Number of youth and caregivers who started at least one type of community based services through RI DCYF between 7/1/14-11/30/15*.

	Youth (under 18)	Youth (18 – 21)	Caregiver (18 and older)	Total
Number of youth and caregivers who received at least one type of community based service paid for by DCYF (duplicated)	1,471	50	260	1,781

* Youth who started Visitation program are excluded from the table. Children receiving Visitation Center are analyzed separately as this program specifically serves younger children already in out-of-home placements to support successful reunification with their parents (see page 25).

NOTES:

- A youth may be counted in more than one category if age at the start of each community based service falls under multiple categories.
- Data duplicated by service type. If a youth received multiple services between 7/1/14-11/30/15, a youth is counted once for each service. If a youth received a same service with more than 90 days gap between the sessions, it is counted as separate service episodes and a youth is counted more than once.
- 15 youth who started a service while in RITS or psychiatric hospital are excluded from the report.
- 4 youth who started Family Therapy, Restorative Justice or Enrichment programs are excluded from the report due to small number.



Picture Source: Child & Family <http://childandfamilyri.com/>

Children, youth and caregivers receiving selected RI DCYF funded community based services

Among the DCYF funded community based services, the majority of children and youth who started a service between July 1, 2014 and November 30, 2015 (excludes caregivers) were primarily serviced by 4 RI DCYF funded services, Enhanced Family Support Services (EFSS), Preserving Family Networks (PFN), Multisystemic Therapy (MST) and Trauma Systems Therapy (TST) (see Figure 1). As services are often tailored to different age groups, the utilization of services is stratified by age revealing different utilization patterns. Figure 2 shows the percent of youth among age categories and their most frequently used service type. Among youth, the largest proportion of youth in each age group, 29.2% of youth age 0-10, 25.0% of youth age 11-17 and 36.0% of youth age 18-21, received EFSS. Among caregivers age 18 and older, the largest proportion, 54.6%, received mental health counseling, followed by Parent Aide/Education, 23.1%, substance abuse counseling, 15.8%, and sexual abuse counseling, 3.1%.

Figure 1. Number of youth and caregivers who started at least one type of community based services between 7/1/14-11/30/15, by service type and age. (N=1,783) (see appendix for details)

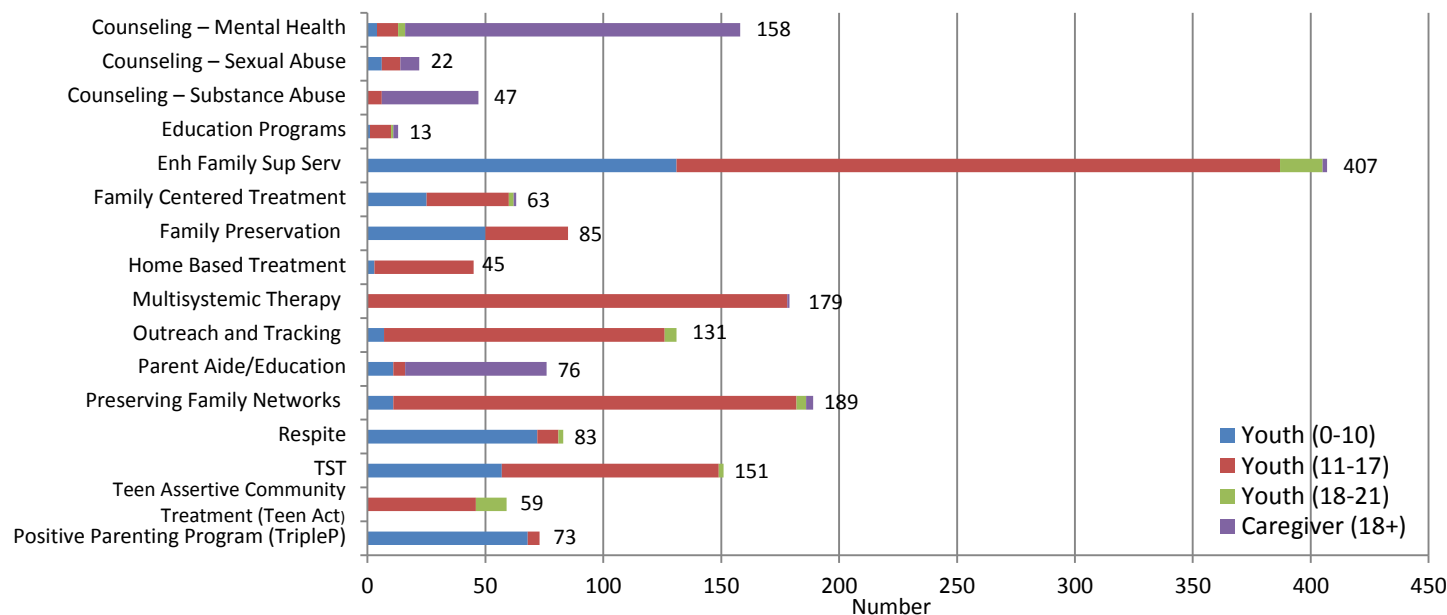
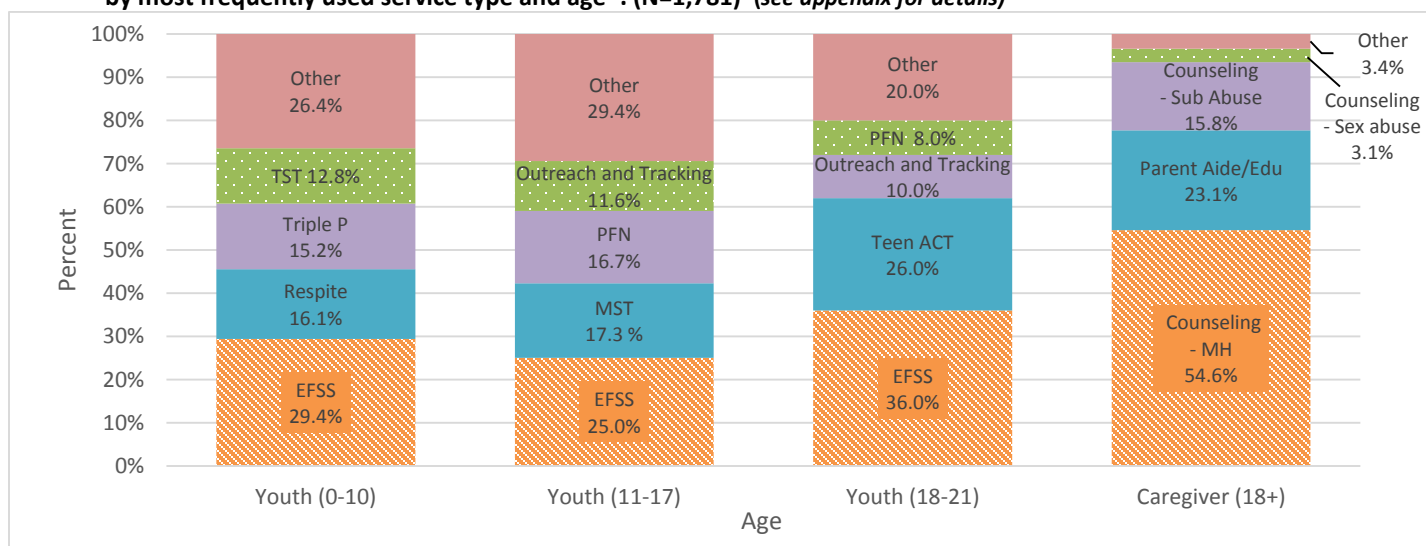


Figure 2. Percent of youth and caregivers who started at least one type of community based services between 7/1/14-11/30/15, by most frequently used service type and age*. (N=1,781) (see appendix for details)



* Youth who started Visitation program are excluded from the table. Children receiving Visitation Center are analyzed separately as this program specifically serves younger children already in out-of-home placements to support successful reunification with their parents (see page 25).

NOTE: TST includes both community based and residential services. TST community based indicates service began in-home. TST residential indicates service began out-of-home but a child could have continued into community.

Community based services: Placement types and population characteristics

Table 2 provides data on children and youth and whether they resided in-home or in an out-of-home placement when they started the community based services. As the purpose of this surveillance report focuses on children and youth in their homes receiving community based services, the majority of children and youth, 63.5%, were in home when they began the community based service. This purpose of focusing on in-home holds true except for the additional focus on the Visitation program primarily aimed at young children who are in a foster family setting receiving visitation support with their primary caregivers (see Visitation Center, page 25).

Table 2. Number and percent of youth who started at least one type of community based service between 7/1/14-11/30/15, by placement type at the start of service and age*. (N=1,521)

Placement	Age						Total	
	0 – 10		11 – 17		18 – 21			
	N	%	N	%	N	%	N	%
Started service in-home	182	40.8%	759	74.0%	24	48.0%	965	63.5%
Started service out-of-home	264	59.2%	266	26.0%	26	52.0%	556	36.5%
Total	446	100.0%	1025	100.0%	50	100.0%	1521	100.0%

* Youth who started Visitation program are excluded from the table. They are analyzed separately as this program specifically serves younger children already in out-of-home placements to support successful reunification with their parents (see page 25).

NOTES:

- In-home placements defined in this report include living arrangement of stay with friend, guardian, married parents, relatives, separated couple, single female parent, single male parent, subsidized adoption, and unmarried couple. This is not exclusively child welfare placement.

- Out-of-home placements defined in this report include AWOL, group home, independent living (funded or unfunded), relative foster home, relative foster home – pending license, non-relative foster home, private agency foster care, pre-adoptive home, residential facility, respite care, shelter care, substance abuse facility, and other. This is not exclusively child welfare placement.

Selected 6-month outcomes of children and youth who started a community based service from *IN-HOME* between 7/1/14-11/30/15

Among the 965 children and youth who started a community based service between July 1, 2014 and November 30, 2015 while in-home, 56.3% were male, 81.2% were between the age of 11 and 21, and 46.8% were White Non-Hispanic, 12.3% were Black Non-Hispanic, 9.8% were Multiracial/other Non-Hispanic and 30.6% were Hispanic (any race) (see Figure 3). Figure 4 presents data on the demographics of the caregiver with 57.3% female, 87.3% parent, and 59.2% White Non-Hispanic, 14.2% Black Non-Hispanic, 3.8% Multiracial/other Non-Hispanic and 18.8% Hispanic (any race).

Figure 3. Demographics of youth who started community based services from *IN-HOME* between 7/1/14-11/30/15. (N=965)

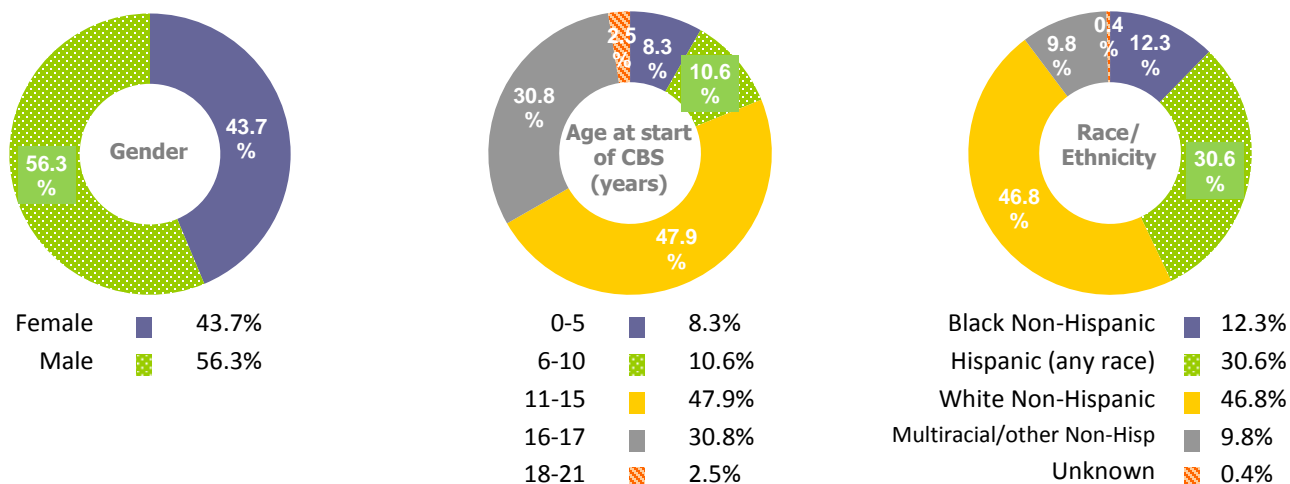
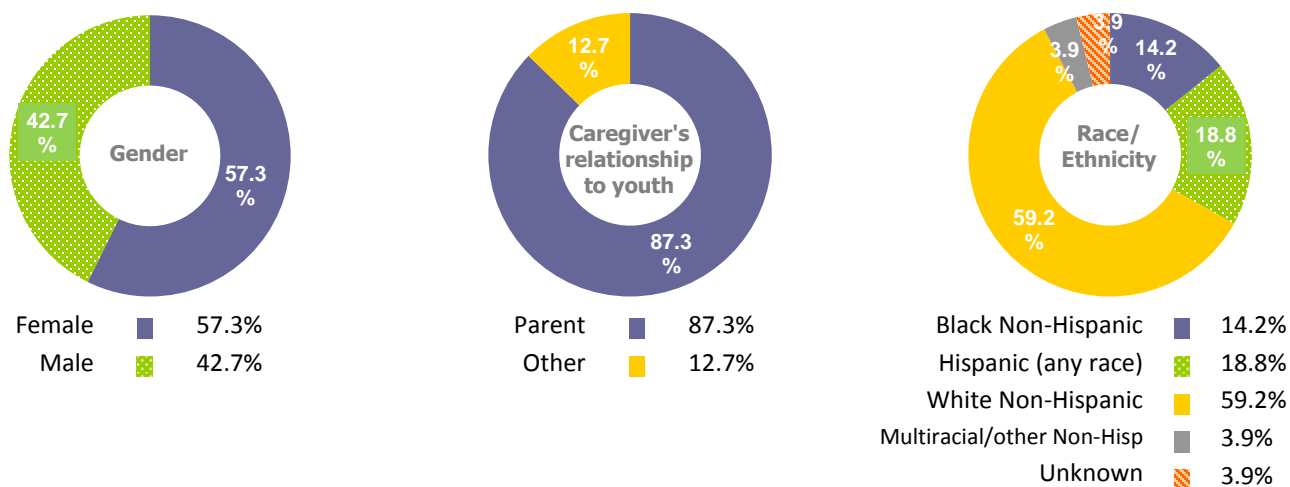


Figure 4. Demographics of caregivers who started community based services between 7/1/14-11/30/15. (N=260)



NOTES:

- In-home placements defined in this report include living arrangement of stay with friend, guardian, married parents, relatives, separated couple, single female parent, single male parent, subsidized adoption, and unmarried couple. This is not exclusively child welfare placement.

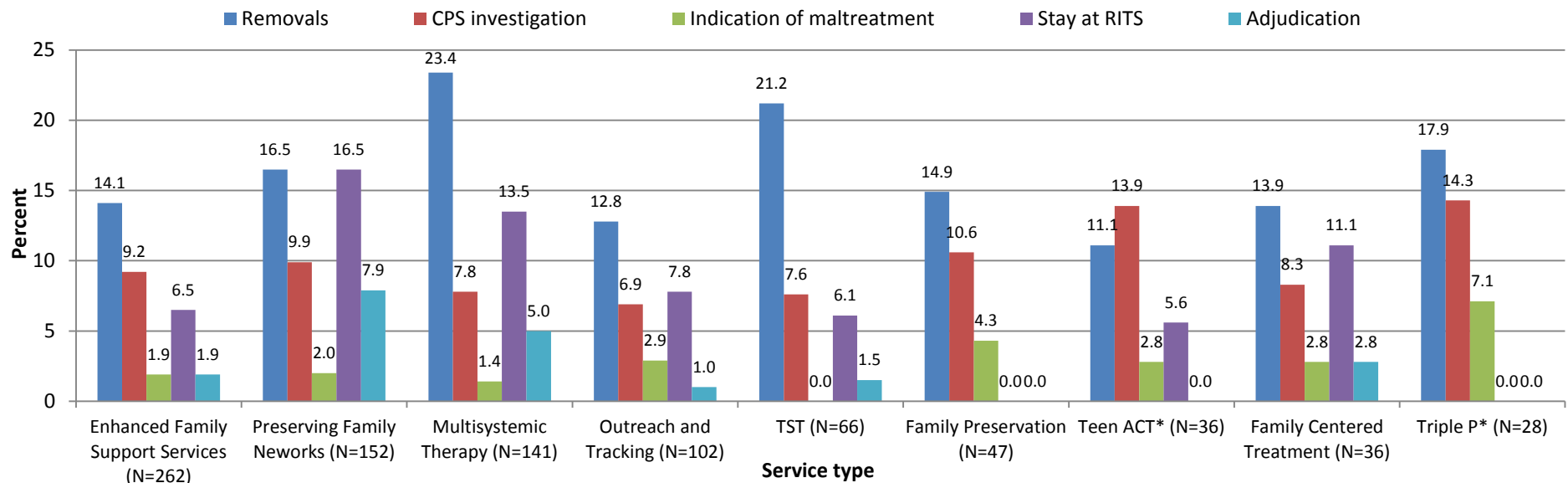
- Parent group includes adoptive parent, biological parent and step parent. Other includes foster parent, legal guardian, maternal grandparent, non-relative, other relative, parent's paramour, paternal aunt, sibling's father and step sibling grandparent.

Selected 6-month outcomes of children and youth who started a community based service from IN-HOME between 7/1/14-11/30/15

Figure 5 provides data on children and youth who started a DCYF funded community based service from in-home between July 1, 2014 and November 30, 2015 and experienced at least one of the 5 selected outcomes within 6 months of starting a service. Depending on the length of time a youth received a service, a youth may or may not have been receiving the service at the time of experiencing the outcome. This information can serve as an initial starting point for each respective service to assess these selected outcomes over time and should not be viewed as a comparison across these programs due to differences in populations served by the respective services (i.e. differences in age groups, family and presenting concerns, severity of presenting concerns etc.)

The most frequent outcome amongst all community based services totaled (all 16 services listed in Appendix Table 2) was “Removals” followed by “CPS investigations”, “Stay at Rhode Island Training School (RITS)”, “Adjudication” and “Indication of maltreatment”. For each of the individual most frequent or new services, “Removals” was the most frequently experienced outcome for 8 out of the 9 services, followed by “CPS investigation” for 5 out of the 9 services and “Stay at RITS” for 4 out of the 9 services (see Figure 5).

Figure 5. Selected 6-month outcomes of youth who started a community based service from in-home between 7/1/14-11/30/15, by most frequently used or new service type. (see appendix for number and percent of selected outcomes for all services)



*Triple P: Positive Parenting Program, Teen Act: Teen Assertive Community Treatment

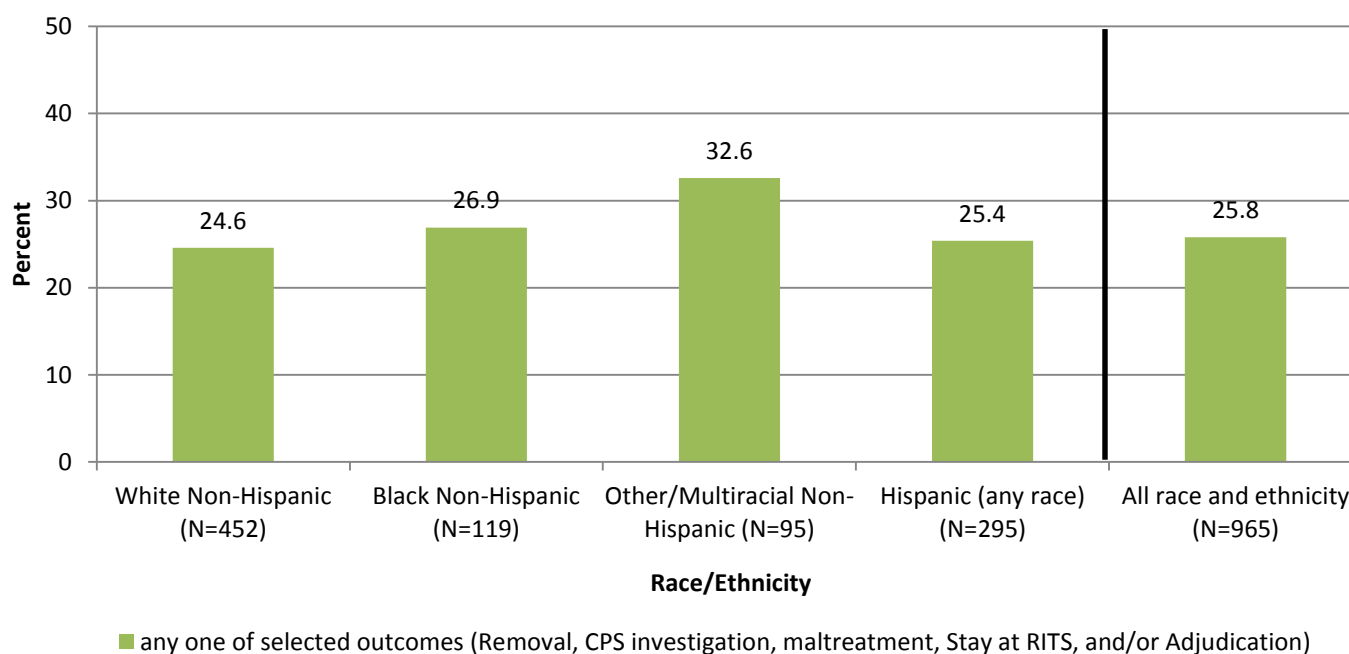
NOTES:

- Six month follow-up period begins on the service start date.
- A youth may be counted in more than one outcome category, if a youth experienced multiple outcomes within the 12 month period.
- In-home placements defined in this report include living arrangement of stay with friend, guardian, married parents, relatives, separated couple, single female parent, single male parent, subsidized adoption, and unmarried couple. This is not exclusively child welfare placement.
- Depending on the length of time a youth received a service, a youth may or may not have been receiving the service at the time of experiencing the outcome. Youth may have ended the service any time before or after experiencing a selected outcome.
- TST includes both community based and residential services. TST community based indicates service began in-home. TST residential indicates service began out-of-home but a child could have continued into community.

Disproportionality in selected 6-month outcomes of children and youth who started a community based service from IN-HOME between 7/1/14-11/30/15

Among all youth in this sample, similar percentages across the racial and ethnic categories experienced at least one of the selected 5 outcomes. The data suggests an absence of disproportionality by race or ethnicity in experiencing at least one of the 5 selected outcomes (see Figure 7). There may be disproportionality for any of the 5 individual outcomes; however, due to small numbers, this analysis was unable to be conducted at this time. A future report will combine multiple years that would increase the sample to provide analysis on individual outcomes across racial and ethnic groups. Some of the racial groups were combined due to small numbers.

Figure 6. Disproportionality in experiencing any one of selected 6-month outcomes among youth who started a community based service from in-home between 7/1/14-11/30/15, by race and ethnicity.



Note:

- Four youth with unknown race and ethnicity are excluded from the graph.
- Six month follow-up period begins on the service start date.
- In-home placements defined in this report include living arrangement of stay with friend, guardian, married parents, relatives, separated couple, single female parent, single male parent, subsidized adoption, and unmarried couple. This is not exclusively child welfare placement.
- Depending on the length of time a youth received a service, a youth may or may not have been receiving the service at the time of experiencing the outcome. Youth may have ended the service any time before or after experiencing a selected outcome.

Survival analysis on selected 6-month outcomes of children and youth who started a community based service from IN-HOME between 7/1/14-11/30/15

Survival Analysis: Time to Event

Figures 7-11 presents results from the survival analysis on the 965 children and youth who started a child/youth centric community based service while in-home between 7/1/14 and 11/30/15. These programs are listed in Figure 1 on page 3, and Table 2 in the appendix. The survival analysis combines all child/youth centric community based services to provide a system level analysis on the 5 selected outcomes: 1) time to removal; 2) time to CPS investigation; 3) time to CPS indicated maltreatment; 4) time to adjudication; and 5) time to RI training school (RITS) stay. As indicated, children began one of the community based programs while in-home and were followed for 6-months. On a system level, **6 months post community based program start**:

- 84% of children remained in home (Figure 7)
- 91% of children did not have a CPS investigation (Figure 8)
- 98% of children did not have an indicated maltreatment (figure 9)
- 97% of youth did not have an adjudication (Figure 10)
- 92% did not enter the RI Training School (Figure 11)

Figure 8. Survival Curve: Ninety-one percent of children and youth who began a community based program while in home did not have a CPS investigation 6 months post program start (N=965)

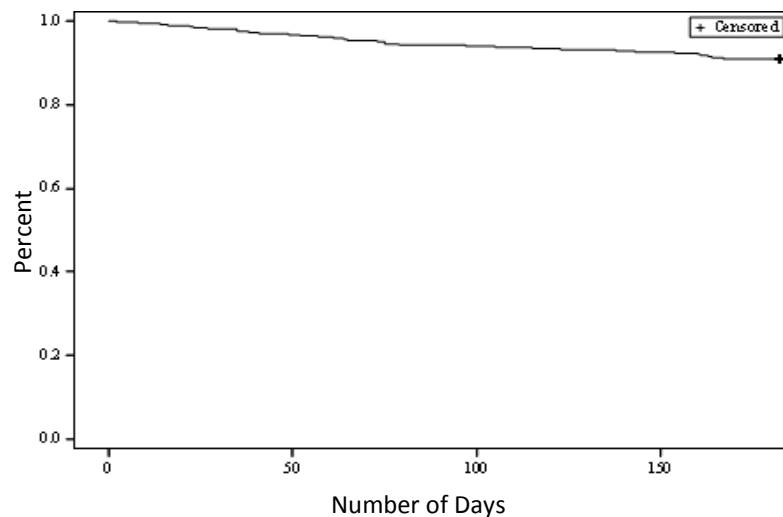


Figure 7. Survival Curve: Eighty-four percent of children and youth who began a community based program while in-home remained in home 6 months post program start (N=965)

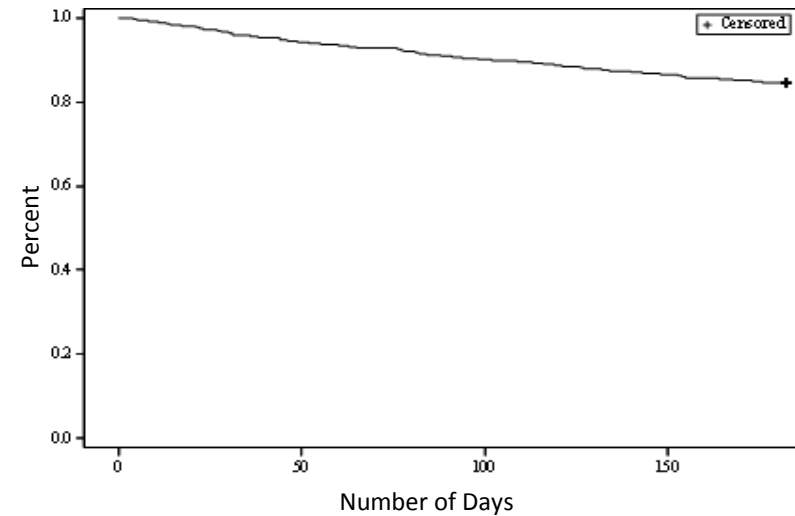
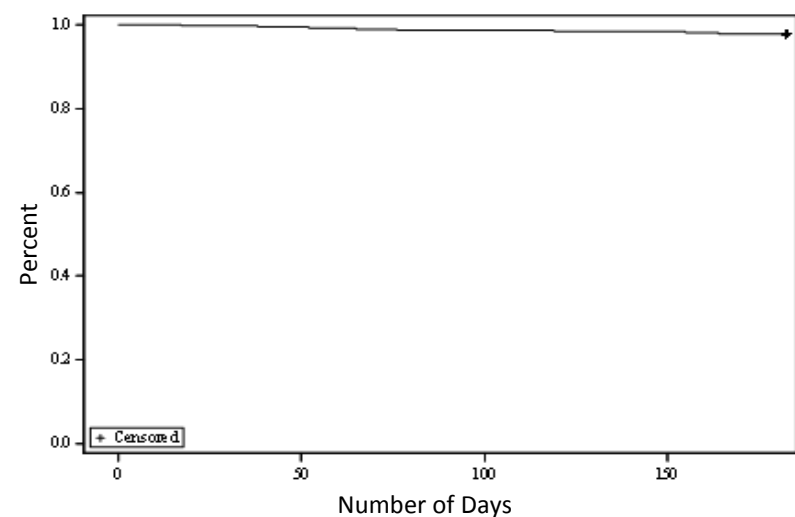


Figure 9. Survival Curve: Ninety-eight percent of children and youth who began a community based program while in home did not have an indicated maltreatment 6 months post program start (N=965)



Survival analysis on selected 6-month outcomes of children and youth who started a community based service from IN-HOME between 7/1/14-11/30/15

Figure 10. Survival Curve: **Ninety-seven percent** of children and youth who began a community based program while in home **did not have an adjudication** 6 months post program start (N=965)

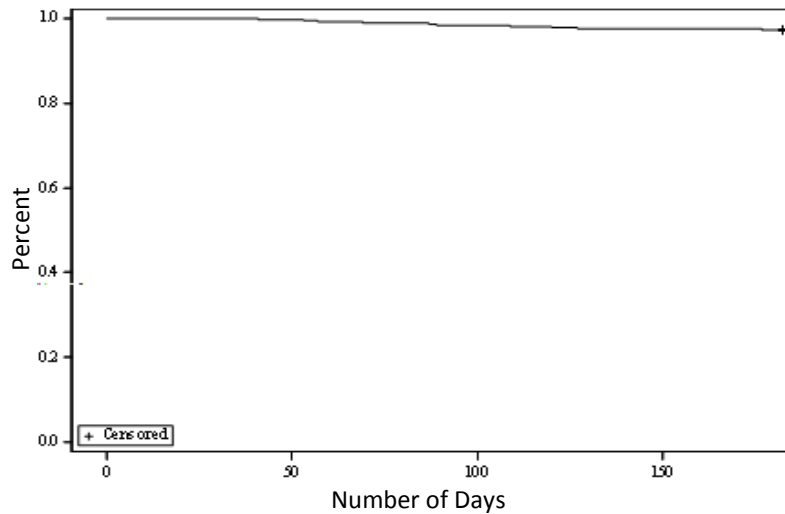
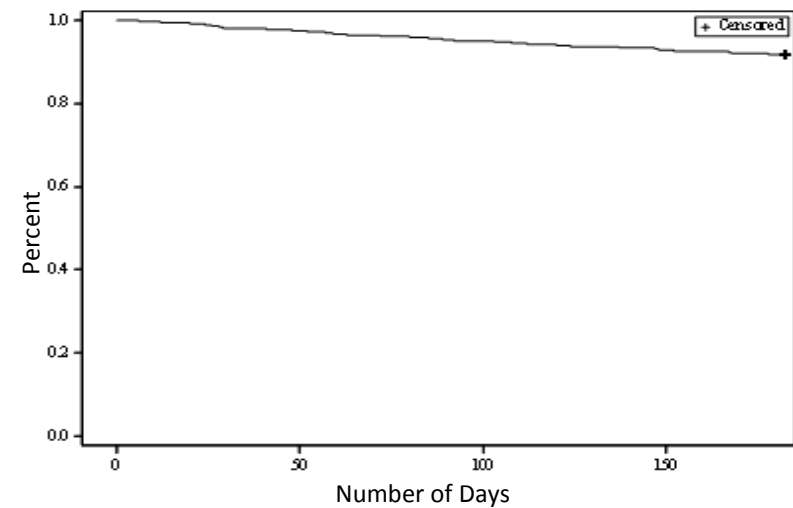


Figure 11. Survival Curve: **Ninety-two percent** of youth who began a community based program while in-home remained in home and **did not enter the RI Training School** 6 months post program start (N=965)



Selected 6-month outcomes of children and youth who started a community based service from OUT-OF-HOME between 7/1/14-11/30/15

Among the 556 children and youth who started a community based service between July 1, 2014 and November 30, 2015 while out-of-home, 55.8% were male, 77.2% were between the age of 0 and 15, and 41.4% were White Non-Hispanic (see Figure 12). Children and youth may begin a community based service while out-of-home (in RI DCYF placement) for various reasons of which include being placed in a foster family setting and receiving services or placed in a congregate care setting to assist with the child, youth and family transition from placement. Among all children and youth who started a service out-of-home, 37.6% discharged from all out-of-home placements and median length of time from start of a service to discharge was 50 days (see Appendix Table 4). Percent of children and youth discharged within 6 months of starting a service for most frequent or new services is reflected in Figure 13.

Figure 12. Demographics of youth who started community based services from out-of-home between 7/1/14-11/30/15. (N=556)

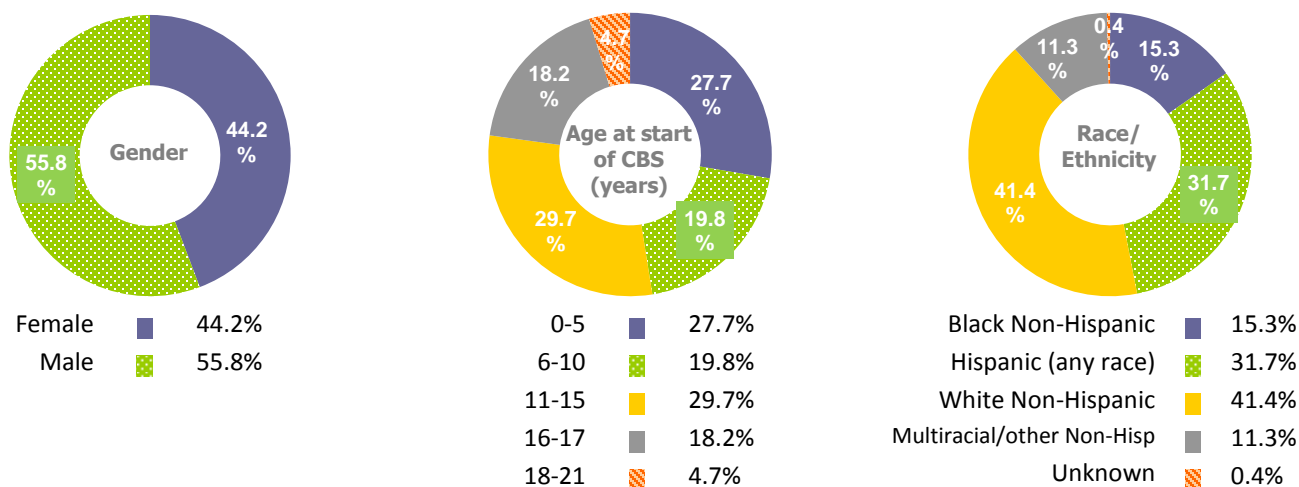
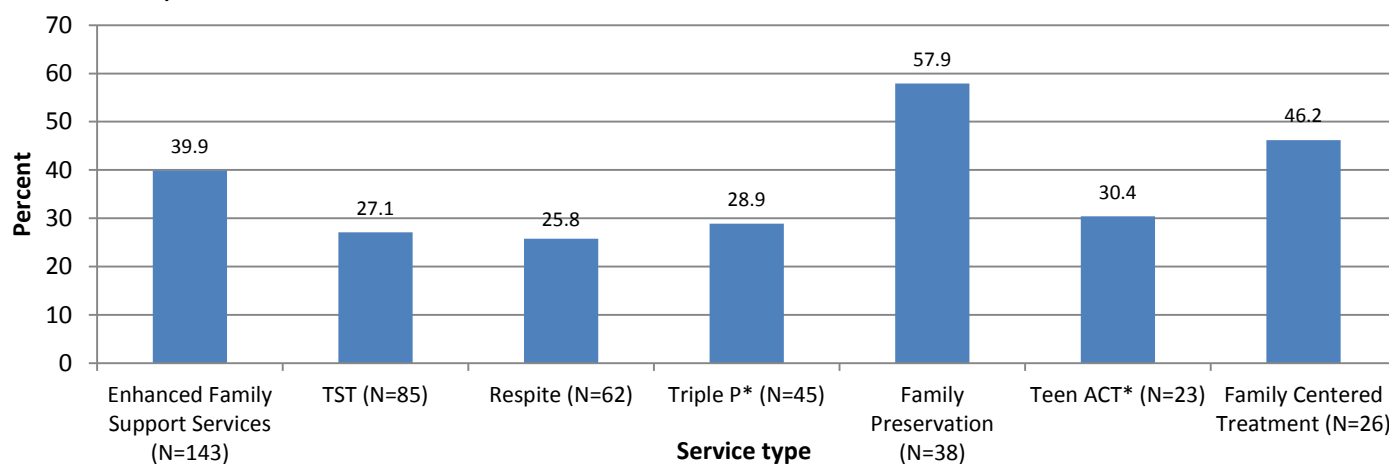


Figure 13. Percent of youth discharged within 6 months of starting a community based service out-of-home between 7/1/14-11/30/15, by most frequently used or new service type. (see appendix for number, percent and median length of time for all services)



*Triple P: Positive Parenting Program, Teen Act: Teen Assertive Community Treatment

NOTES:

- Six month follow-up period begins on the service start date.
- Out-of-home placements defined in this report include AWOL, group home, independent living (funded or unfunded), relative foster home, relative foster home – pending license, non-relative foster home, private agency foster care, pre-adoptive home, residential facility, respite care, shelter care, substance abuse facility, and other. This is not exclusively child welfare placement.
- Depending on the length of time a youth received a service, a youth may or may not have been receiving the service at the time of discharge. Youth may have ended the service any time before or after discharging from all out-of-home placements.
- TST includes both community based and residential services. TST community based indicates service began in-home. TST residential indicates service began out-of-home but a child could have continued into community.

Enhanced Family Support Services (EFSS)

Table 1. Number and percent of youth and caregivers who started EFSS between 7/1/14-11/30/15, by age.

Age group	N	%
Youth	405	99.5%
0 – 10	131	32.2%
11 – 17	256	62.9%
18 – 21	18	4.4%
Caregiver (18+)	2	0.5%
Total	407	100.0%

Table 2. Number and percent of youth who started EFSS between 7/1/14-11/30/15, by placement type at the start of EFSS.

Placement	N	%
Started EFSS in-home	262	64.7%
Started EFSS out-of-home	143	35.3%
Total	405	100.0%

Figure 1. Demographics of youth who started EFSS from in-home between 7/1/14-11/30/15 (N=262)

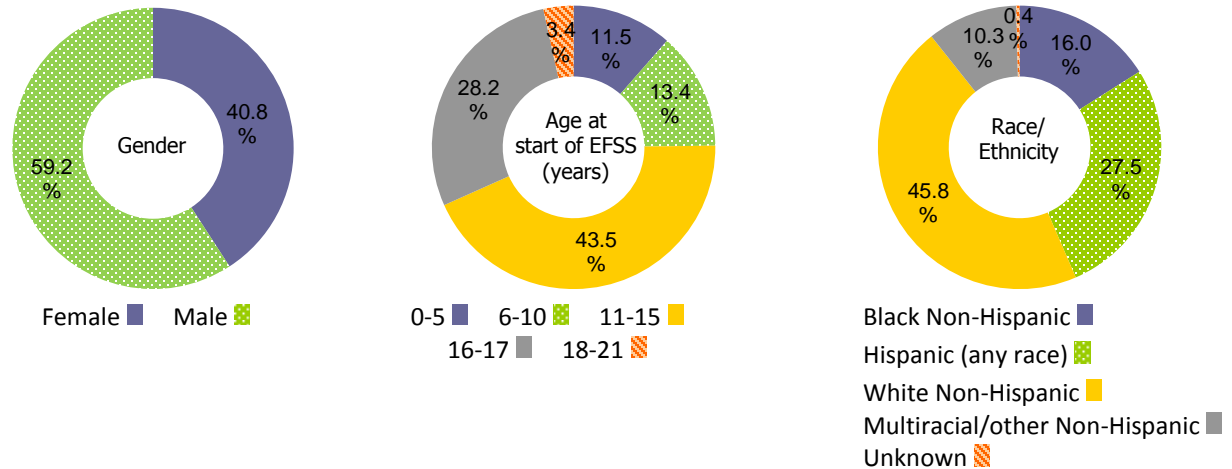


Table 3. Six-month follow-up of youth who started EFSS from in-home between 7/1/14-11/30/15, by age and selected outcomes. (N=262)

Age group	Total number of youth	Removal from home			CPS investigation			Indication of maltreatment			Stay at RITS			Adjudication		
		N	% (row)	Median days	N	% (row)	Median days	N	% (row)	Median days	N	% (row)	Median days	N	% (row)	Median days
0 – 10	65	8	12.3%	53.5	7	10.8%	65.0	2	3.1%	102.0	0	0.0%	-	0	0.0%	-
11 – 17	188	29	15.4%	60.0	17	9.0%	74.0	3	1.6%	76.0	16	8.5%	61.0	4	2.1%	68.5
18 – 21	9	0	0.0%	-	0	0.0%	-	0	0.0%	-	1	11.1%	23.0	1	11.1%	41.0
Total	262	37	14.1%	60.0	24	9.2%	69.5	5	1.9%	76.0	17	6.5%	59.0	5	1.9%	50.0

NOTES:

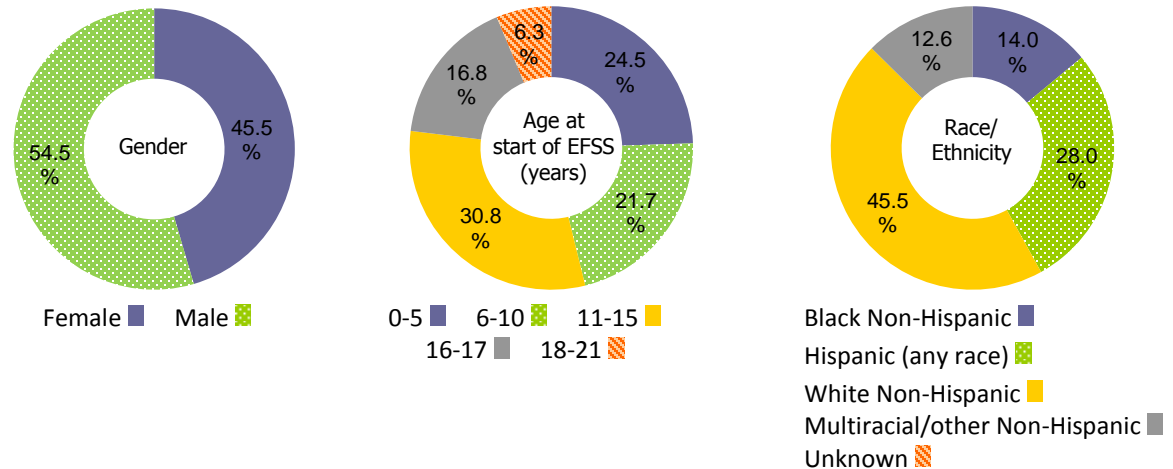
- Six month follow-up period begins on the service start date.
- A youth may be counted in more than one outcome category, if a youth experienced multiple outcomes within the 6 month period.
- Median length of time (in days) between the start of EFSS and the selected outcome.
- Depending on the length of time a youth received EFSS, a youth may or may not have been receiving EFSS at the time of experiencing the outcome. Youth may have ended EFSS any time before or after experiencing a selected outcome.
- In-home placements defined in this report include living arrangement of stay with friend, guardian, married parents, relatives, separated couple, single female parent, single male parent, subsidized adoption, and unmarried couple. This is not exclusively child welfare placement.

Enhanced Family Support Services (EFSS)

Table 4. Six-month follow-up of youth who started EFSS from out-of-home between 7/1/14-11/30/15, by age and selected outcomes. (N=143)

Age group	Total number of youth	Discharge from all out-of-home placements		
		N	% (row)	Median days
0 – 10	66	24	36.4%	92.5
11 – 17	68	29	42.7%	52.0
18 – 21	9	4	44.4%	119.0
Total	143	57	39.9%	63.0

Figure 2. Demographics of youth who started EFSS from out-of-home between 7/1/14-11/30/15 (N=143)



NOTES:

- Six month follow-up period begins on the service start date.
- A youth may be counted in more than one outcome category, if a youth experienced multiple outcomes within the 6 month period.
- Median length of time (in days) between the start of EFSS and the selected outcome.
- Depending on the length of time a youth received EFSS, a youth may or may not have been receiving EFSS at the time of discharge. Youth may have ended EFSS any time before or after discharging from all out-of-home placements.
- Out-of-home placements defined in this report include living arrangement of AWOL, group home, independent living (funded), non-relative foster – pending license, non-relative foster home, pre-adoptive home, private agency foster care, relative foster home, relative foster home, pending license, residential facility, respite care, shelter care and substance abuse facility. This is not exclusively child welfare placement.

Preserving Family Networks (PFN)

Table 1. Number and percent of youth and caregivers who started PFN between 7/1/14-11/30/15, by age.

Age group	N	%
Youth	186	98.4%
0 – 10	11	5.8%
11 – 17	171	90.5%
18 – 21	4	2.1%
Caregiver (18+)	3	1.6%
Total	189	100.0%

Table 2. Number and percent of youth who started PFN between 7/1/14-11/30/15, by placement type at the start of PFN.

Placement	N	%
Started PFN in-home	152	81.7%
Started PFN out-of-home	34	18.3%
Total	186	100.0%

Figure 1. Demographics of youth who started PFN from in-home between 7/1/14-11/30/15 (N=152)

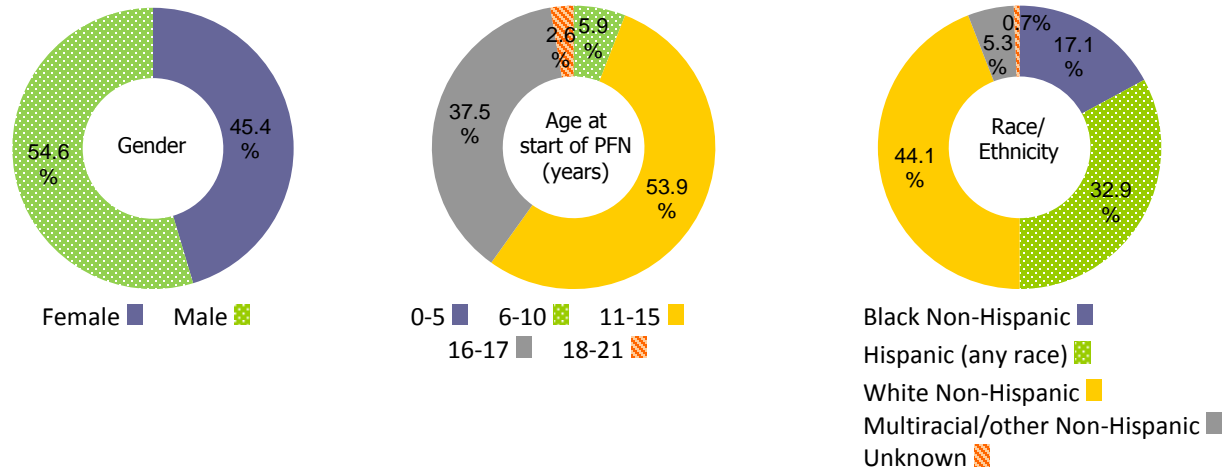


Table 3. Six-month follow-up of youth who started PFN from in-home between 7/1/14-11/30/15, by age and selected outcomes. (N=152)

Age group	Total number of youth	Removal from home			CPS investigation			Indication of maltreatment			Stay at RITS			Adjudication		
		N	% (row)	Median days	N	% (row)	Median days	N	% (row)	Median days	N	% (row)	Median days	N	% (row)	Median days
0 – 10	9	2	22.2%	109.0	1	11.1%	52.0	1	11.1%	52.0	0	0.0%	-	0	0.0%	-
11 – 17	139	22	15.8%	57.0	14	10.1%	39.0	2	1.4%	49.5	25	18.0%	85.0	12	8.6%	90.5
18 – 21	4	1	25.0%	132.0	0	0.0%	-	0	0.0%	-	0	0.0%	-	0	0.0%	-
Total	152	25	16.5%	63.0	15	9.9%	40.0	3	2.0%	52.0	25	16.5%	85.0	12	7.9%	90.5

NOTES:

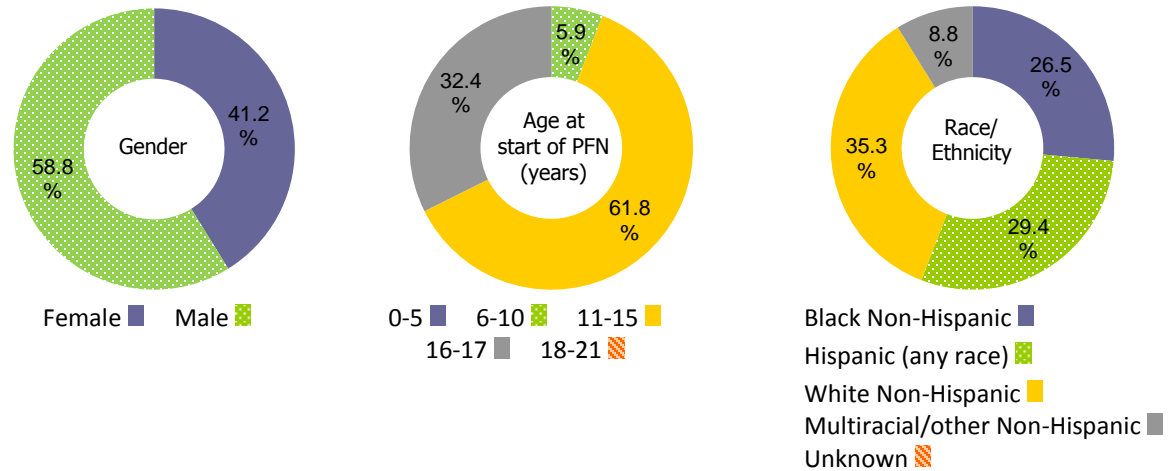
- Six month follow-up period begins on the service start date.
- A youth may be counted in more than one outcome category, if a youth experienced multiple outcomes within the 6 month period.
- Median length of time (in days) between the start of PFN and the selected outcome.
- Depending on the length of time a youth received PFN, a youth may or may not have been receiving PFN at the time of experiencing the outcome. Youth may have ended PFN any time before or after experiencing a selected outcome.
- In-home placements defined in this report include living arrangement of stay with friend, guardian, married parents, relatives, separated couple, single female parent, single male parent, subsidized adoption, and unmarried couple. This is not exclusively child welfare placement.

Preserving Family Networks (PFN)

Table 4. Six-month follow-up of youth who started PFN from out-of-home between 7/1/14-11/30/15, by age and selected outcomes. (N=34)

Age group	Total number of youth	Discharge from all out-of-home placements		
		N	% (row)	Median days
0 – 10	2	0	0.0%	-
11 – 17	32	20	62.5%	18.0
18 – 21	0	-	-	-
Total	34	20	58.8%	18.0

Figure 2. Demographics of youth who started PFN from out-of-home between 7/1/14-11/30/15 (N=34)



NOTES:

- Six month follow-up period begins on the service start date.
- A youth may be counted in more than one outcome category, if a youth experienced multiple outcomes within the 6 month period.
- Median length of time (in days) between the start of PFN and the selected outcome.
- Depending on the length of time a youth received PFN, a youth may or may not have been receiving PFN at the time of discharge. Youth may have ended PFN any time before or after discharging from all out-of-home placements.
- Out-of-home placements defined in this report include living arrangement of AWOL, group home, independent living (funded), non-relative foster – pending license, non-relative foster home, pre-adoptive home, private agency foster care, relative foster home, relative foster home, pending license, residential facility, respite care, shelter care and substance abuse facility. This is not exclusively child welfare placement.

Multisystemic Therapy (MST)

Table 1. Number and percent of youth and caregivers who started MST between 7/1/14-11/30/15, by age.

Age group	N	%
Youth	178	99.4%
0 – 10	0	0.0%
11 – 17	178	99.4%
18 – 21	0	0.0%
Caregiver (18+)	1	0.6%
Total	179	100.0%

Table 2. Number and percent of youth who started EFSS between 7/1/14-11/30/15, by placement type at the start of MST.

Placement	N	%
Started MST in-home	141	79.2%
Started MST out-of-home	37	20.8%
Total	178	100.0%

Figure 1. Demographics of youth who started MST from in-home between 7/1/14-11/30/15 (N=141)

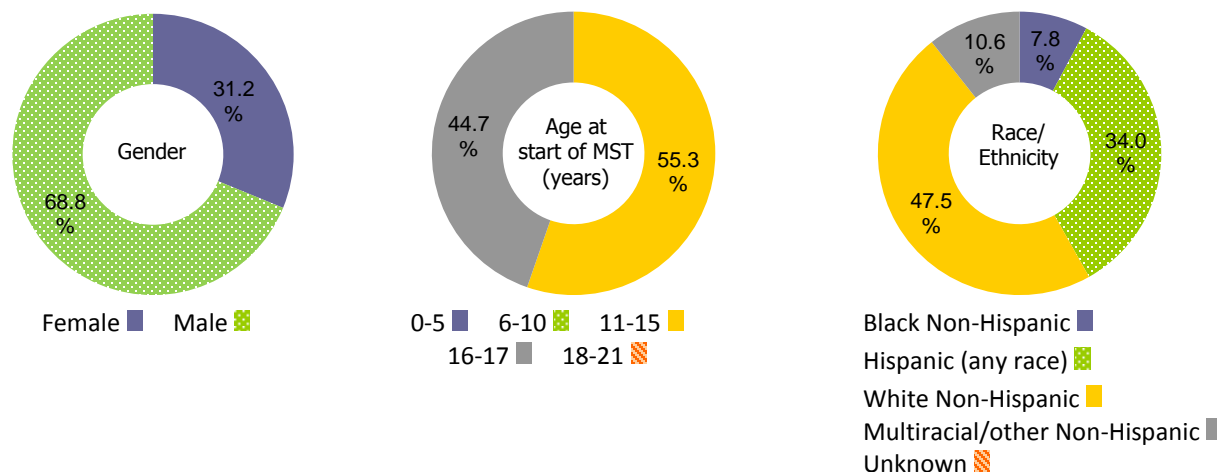


Table 3. Six-month follow-up of youth who started MST from in-home between 7/1/14-11/30/15, by age and selected outcomes. (N=141)

Age group	Total number of youth	Removal from home			CPS investigation			Indication of maltreatment			Stay at RITS			Adjudication		
		N	% (row)	Median days	N	% (row)	Median days	N	% (row)	Median days	N	% (row)	Median days	N	% (row)	Median days
0 – 10	0	-	-	-	-	-	-	-	-	-	-	-	-	-	-	-
11 – 17	141	33	23.4%	85.0	11	7.8%	59.0	2	1.4%	133.0	19	13.5%	82.0	7	5.0%	89.0
18 – 21	0	-	-	-	-	-	-	-	-	-	-	-	-	-	-	-
Total	141	33	23.4%	85.0	11	7.8%	59.0	2	1.4%	133.0	19	13.5%	82.0	7	5.0%	89.0

NOTES:

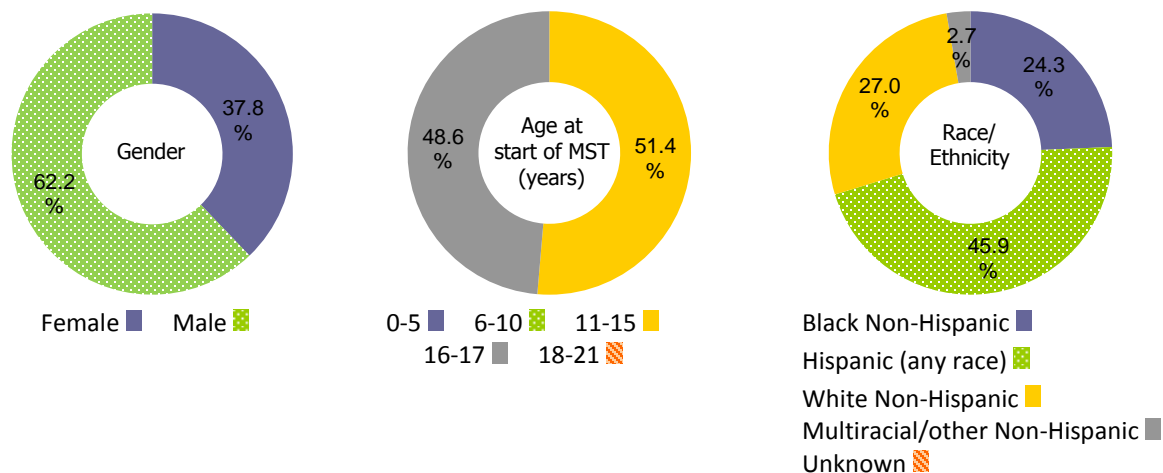
- Six month follow-up period begins on the service start date.
- A youth may be counted in more than one outcome category, if a youth experienced multiple outcomes within the 6 month period.
- Median length of time (in days) between the start of MST and the selected outcome.
- Depending on the length of time a youth received MST, a youth may or may not have been receiving MST at the time of experiencing the outcome. Youth may have ended MST any time before or after experiencing a selected outcome.
- In-home placements defined in this report include living arrangement of stay with friend, guardian, married parents, relatives, separated couple, single female parent, single male parent, subsidized adoption, and unmarried couple. This is not exclusively child welfare placement.

Multisystemic Therapy (MST)

Table 4. Six-month follow-up of youth who started MST from out-of-home between 7/1/14-11/30/15, by age and selected outcomes. (N=37)

Age group	Total number of youth	Discharge from all out-of-home placements		
		N	% (row)	Median days
0 – 10	0	-	-	-
11 – 17	37	25	67.6%	30.0
18 – 21	0	-	-	-
Total	37	25	67.6%	30.0

Figure 2. Demographics of youth who started MST from out-of-home between 7/1/14-11/30/15 (N=37)



NOTES:

- Six month follow-up period begins on the service start date.
- A youth may be counted in more than one outcome category, if a youth experienced multiple outcomes within the 6 month period.
- Median length of time (in days) between the start of MST and the selected outcome.
- Depending on the length of time a youth received MST, a youth may or may not have been receiving MST at the time of discharge. Youth may have ended MST any time before or after discharging from all out-of-home placements.
- Out-of-home placements defined in this report include living arrangement of AWOL, group home, independent living (funded), non-relative foster – pending license, non-relative foster home, pre-adoptive home, private agency foster care, relative foster home, relative foster home, pending license, residential facility, respite care, shelter care and substance abuse facility. This is not exclusively child welfare placement.

Outreach and Tracking (O&T)

Table 1. Number and percent of youth and caregivers who started O&T between 7/1/14-11/30/15, by age.

Age group	N	%
Youth	131	100.0%
0 – 10	7	5.3%
11 – 17	119	90.9%
18 – 21	5	3.8%
Caregiver (18+)	0	0.0%
Total	131	100.0%

Table 2. Number and percent of youth who started O&T between 7/1/14-11/30/15, by placement type at the start of O&T.

Placement	N	%
Started O&T in-home	102	77.9%
Started O&T out-of-home	29	22.1%
Total	131	100.0%

Figure 1. Demographics of youth who started O&T from in-home between 7/1/14-11/30/15 (N=102)

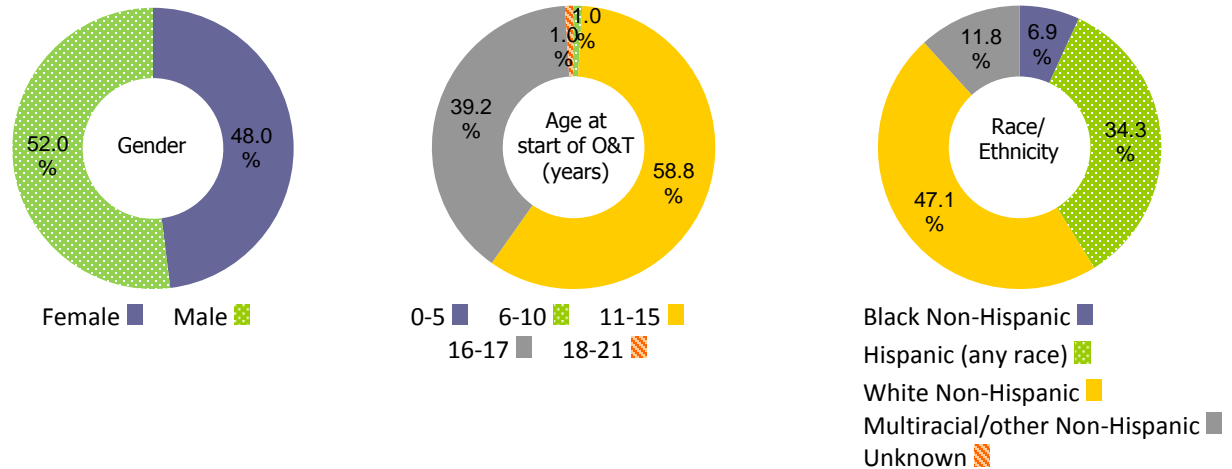


Table 3. Six-month follow-up of youth who started O&T from in-home between 7/1/14-11/30/15, by age and selected outcomes. (N=102)

Age group	Total number of youth	Removal from home			CPS investigation			Indication of maltreatment			Stay at RITS			Adjudication		
		N	% (row)	Median days	N	% (row)	Median days	N	% (row)	Median days	N	% (row)	Median days	N	% (row)	Median days
0 – 10	1	0	0.0%	-	0	0.0%	-	0	0.0%	-	0	0.0%	-	0	0.0%	-
11 – 17	100	13	13.0%	93.0	7	7.0%	64.0	3	3.0%	73.0	8	8.0%	102.0	1	1.0%	125.0
18 – 21	1	0	0.0%	-	0	0.0%	-	0	0.0%	-	0	0.0%	-	0	0.0%	-
Total	102	13	12.8%	93.0	7	6.9%	64.0	3	2.9%	73.0	8	7.8%	102.0	1	1.0%	125.0

NOTES:

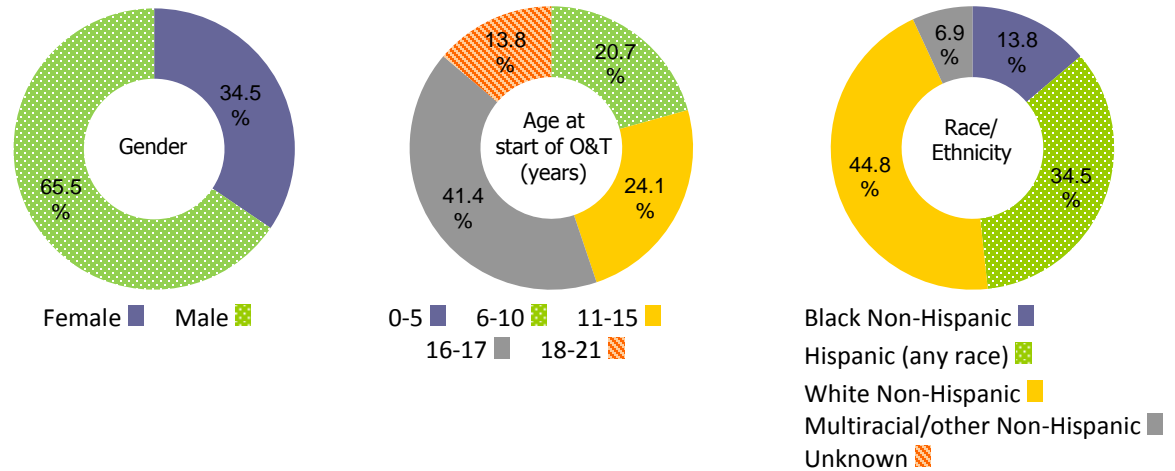
- Six month follow-up period begins on the service start date.
- A youth may be counted in more than one outcome category, if a youth experienced multiple outcomes within the 6 month period.
- Median length of time (in days) between the start of O&T and the selected outcome.
- Depending on the length of time a youth received O&T, a youth may or may not have been receiving O&T at the time of experiencing the outcome. Youth may have ended O&T any time before or after experiencing a selected outcome.
- In-home placements defined in this report include living arrangement of stay with friend, guardian, married parents, relatives, separated couple, single female parent, single male parent, subsidized adoption, and unmarried couple. This is not exclusively child welfare placement.

Outreach and Tracking (O&T)

Table 4. Six-month follow-up of youth who started O&T from out-of-home between 7/1/14-11/30/15, by age and selected outcomes. (N=29)

Age group	Total number of youth	Discharge from all out-of-home placements		
		N	% (row)	Median days
0 – 10	6	0	0.0%	-
11 – 17	19	7	36.8%	85.0
18 – 21	4	3	75.0%	15.0
Total	29	10	34.5%	47.0

Figure 2. Demographics of youth who started O&T from out-of-home between 7/1/14-11/30/15 (N=29)



NOTES:

- Six month follow-up period begins on the service start date.
- A youth may be counted in more than one outcome category, if a youth experienced multiple outcomes within the 6 month period.
- Median length of time (in days) between the start of O&T and the selected outcome.
- Depending on the length of time a youth received O&T, a youth may or may not have been receiving O&T at the time of discharge. Youth may have ended O&T any time before or after discharging from all out-of-home placements.
- Out-of-home placements defined in this report include living arrangement of AWOL, group home, independent living (funded), non-relative foster – pending license, non-relative foster home, pre-adoptive home, private agency foster care, relative foster home, relative foster home, pending license, residential facility, respite care, shelter care and substance abuse facility. This is not exclusively child welfare placement.

Trauma Systems Therapy (TST)

Table 1. Number and percent of youth and caregivers who started TST between 7/1/14-11/30/15, by age.

Age group	N	%
Youth	151	100.0%
0 – 10	57	37.8%
11 – 17	92	60.9%
18 – 21	2	1.3%
Caregiver (18+)	0	0.0%
Total	151	100.0%

Table 2. Number and percent of youth who started EFSS between 7/1/14-11/30/15, by placement type at the start of TST.

Placement	N	%
Started TST in-home	66	43.7%
Started TST out-of-home	85	56.3%
Total	151	100.0%

Figure 1. Demographics of youth who started TST from in-home between 7/1/14-11/30/15 (N=66)

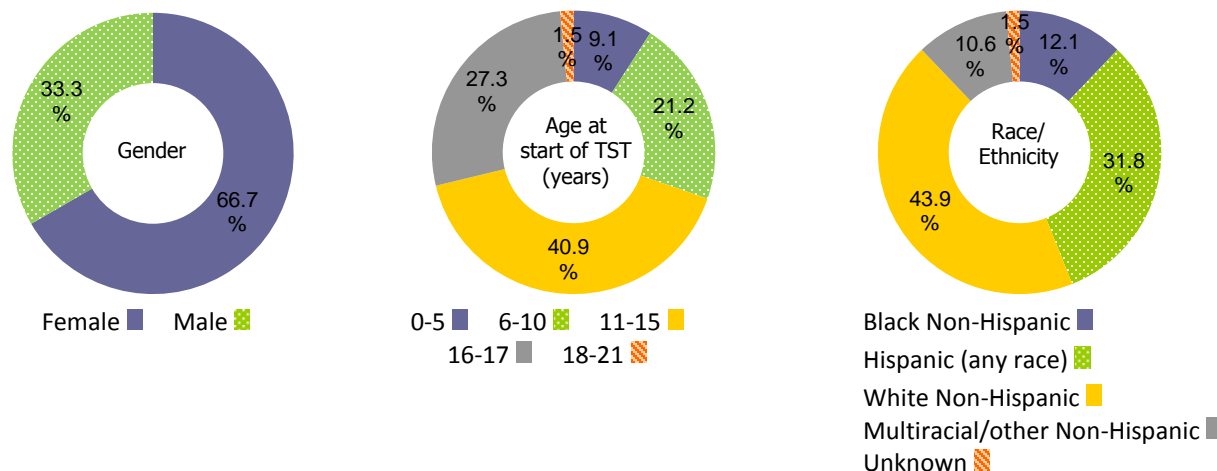


Table 3. Six-month follow-up of youth who started TST from in-home between 7/1/14-11/30/15, by age and selected outcomes. (N=66)

Age group	Total number of youth	Removal from home			CPS investigation			Indication of maltreatment			Stay at RITS			Adjudication		
		N	% (row)	Median days	N	% (row)	Median days	N	% (row)	Median days	N	% (row)	Median days	N	% (row)	Median days
0 – 10	20	6	30.0%	26.5	1	5.0%	83.0	0	0.0%	-	0	0.0%	-	0	0.0%	-
11 – 17	45	8	17.8%	97.5	4	8.9%	95.0	0	0.0%	-	4	8.9%	63.5	1	2.2%	69.0
18 – 21	1	0	0.0%	-	0	0.0%	-	0	0.0%	-	0	0.0%	-	0	0.0%	-
Total	66	14	21.2%	89.5	5	7.6%	83.0	0	0.0%	-	4	6.1%	63.5	1	1.5%	69.0

NOTES:

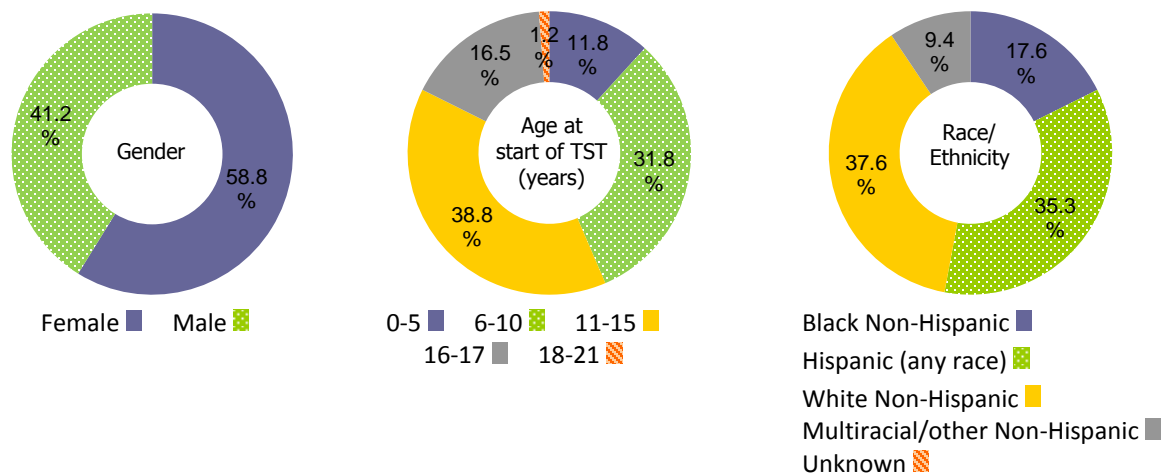
- Six month follow-up period begins on the service start date.
- A youth may be counted in more than one outcome category, if a youth experienced multiple outcomes within the 6 month period.
- Median length of time (in days) between the start of TST and the selected outcome.
- Depending on the length of time a youth received TST, a youth may or may not have been receiving TST at the time of experiencing the outcome. Youth may have ended TST any time before or after experiencing a selected outcome.
- In-home placements defined in this report include living arrangement of stay with friend, guardian, married parents, relatives, separated couple, single female parent, single male parent, subsidized adoption, and unmarried couple. This is not exclusively child welfare placement.
- TST includes both community based and residential services. TST community based indicates service began in-home. TST residential indicates service began out-of-home but a child could have continued into community.

Trauma Systems Therapy (TST)

Table 4. Six-month follow-up of youth who started TST from out-of-home between 7/1/14-11/30/15, by age and selected outcomes. (N=85)

Age group	Total number of youth	Discharge from all out-of-home placements		
		N	% (row)	Median days
0 – 10	37	9	24.3%	73.0
11 – 17	47	14	29.8%	45.0
18 – 21	1	0	0.0%	-
Total	85	23	27.1%	54.0

Figure 2. Demographics of youth who started TST from out-of-home between 7/1/14-11/30/15 (N=85)



NOTES:

- Six month follow-up period begins on the service start date.
- A youth may be counted in more than one outcome category, if a youth experienced multiple outcomes within the 6 month period.
- Median length of time (in days) between the start of TST and the selected outcome.
- Depending on the length of time a youth received TST, a youth may or may not have been receiving TST at the time of discharge. Youth may have ended TST any time before or after discharging from all out-of-home placements.
- Out-of-home placements defined in this report include living arrangement of AWOL, group home, independent living (funded), non-relative foster – pending license, non-relative foster home, pre-adoptive home, private agency foster care, relative foster home, relative foster home, pending license, residential facility, respite care, shelter care and substance abuse facility. This is not exclusively child welfare placement.
- TST includes both community based and residential services. TST community based indicates service began in-home. TST residential indicates service began out-of-home but a child could have continued into community.

Family Preservation (FP)

Table 1. Number and percent of youth and caregivers who started FP between 7/1/14-11/30/15, by age.

Age group	N	%
Youth	85	100.0%
0 – 10	50	58.8%
11 – 17	35	41.2%
18 – 21	0	0.0%
Caregiver (18+)	0	0.0%
Total	85	100.0%

Table 2. Number and percent of youth who started FP between 7/1/14-11/30/15, by placement type at the start of FP.

Placement*	N	%
Started FP in-home	47	55.3%
Started FP out-of-home	38	44.7%
Total	85	100.0%

Figure 1. Demographics of youth who started FP from in-home between 7/1/14-11/30/15 (N=47)

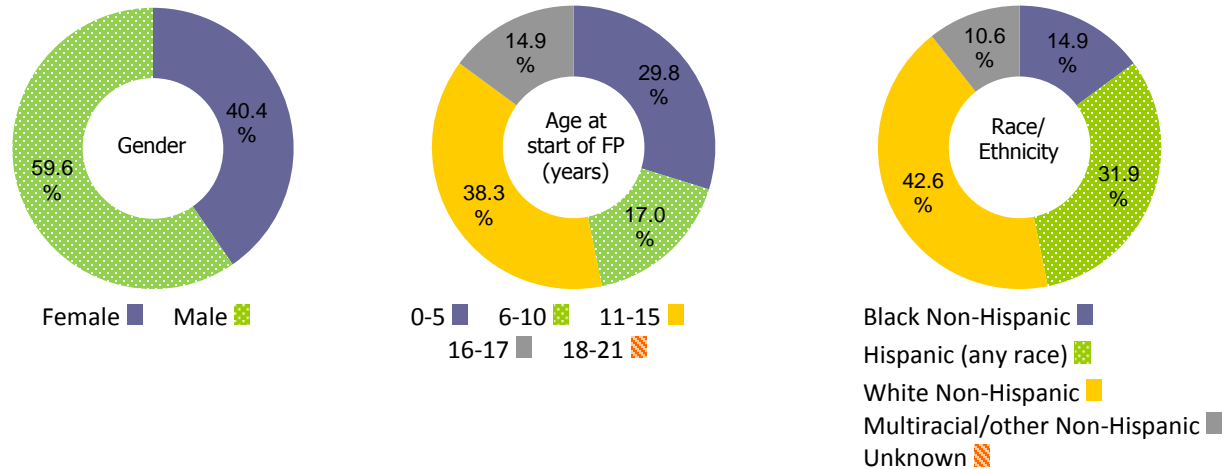


Table 3. Six-month follow-up of youth who started FP from in-home between 7/1/14-11/30/15, by age and selected outcomes. (N=47)

Age group	Total number of youth	Removal from home			CPS investigation			Indication of maltreatment			Stay at RITS			Adjudication		
		N	% (row)	Median days	N	% (row)	Median days	N	% (row)	Median days	N	% (row)	Median days	N	% (row)	Median days
0 – 10	22	6	27.3%	42.5	2	9.1%	84.0	2	9.1%	84.0	0	0.0%	-	0	0.0%	-
11 – 17	25	1	4.0%	5.0	3	12.0%	75.0	0	0.0%	-	0	0.0%	-	0	0.0%	-
18 – 21	0	-	-	-	-	-	-	-	-	-	-	-	-	-	-	-
Total	47	7	14.9%	27.0	5	10.6%	75.0	2	4.3%	84.0	0	0.0%	-	0	0.0%	-

NOTES:

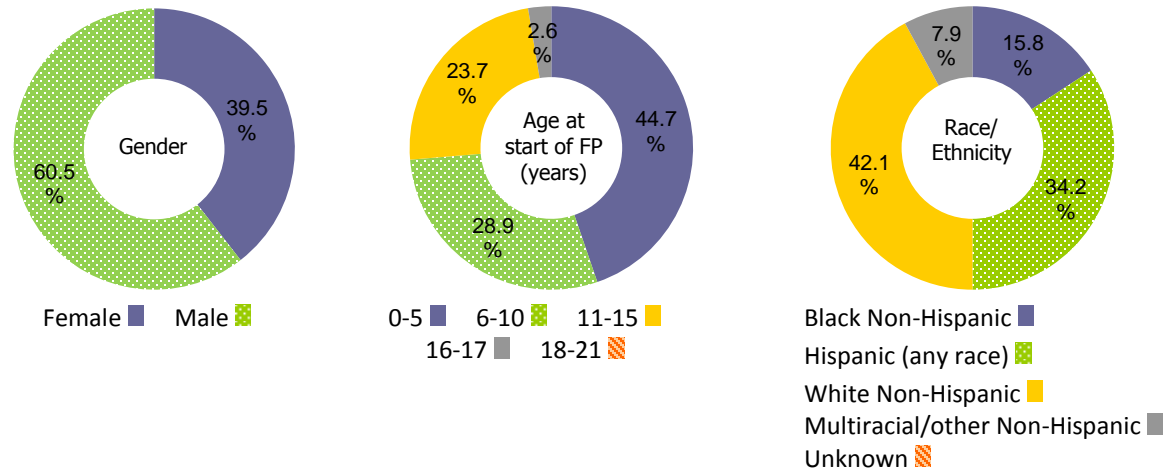
- Six month follow-up period begins on the service start date.
- A youth may be counted in more than one outcome category, if a youth experienced multiple outcomes within the 6 month period.
- Median length of time (in days) between the start of FP and the selected outcome.
- Depending on the length of time a youth received FP, a youth may or may not have been receiving FP at the time of experiencing the outcome. Youth may have ended FP any time before or after experiencing a selected outcome.
- In-home placements defined in this report include living arrangement of stay with friend, guardian, married parents, relatives, separated couple, single female parent, single male parent, subsidized adoption, and unmarried couple. This is not exclusively child welfare placement.

Family Preservation (FP)

Table 4. Six-month follow-up of youth who started FP from out-of-home between 7/1/14-11/30/15, by age and selected outcomes. (N=38)

Age group	Total number of youth	Discharge from all out-of-home placements		
		N	% (row)	Median days
0 – 10	28	17	60.7%	37.0
11 – 17	10	5	50.0%	91.0
18 – 21	0	-	-	-
Total	38	22	57.9%	43.5

Figure 2. Demographics of youth who started FP from out-of-home between 7/1/14-11/30/15 (N=38)



NOTES:

- Six month follow-up period begins on the service start date.
- A youth may be counted in more than one outcome category, if a youth experienced multiple outcomes within the 6 month period.
- Median length of time (in days) between the start of FP and the selected outcome.
- Depending on the length of time a youth received FP, a youth may or may not have been receiving FP at the time of discharge. Youth may have ended FP any time before or after discharging from all out-of-home placements.
- Out-of-home placements defined in this report include living arrangement of AWOL, group home, independent living (funded), non-relative foster – pending license, non-relative foster home, pre-adoptive home, private agency foster care, relative foster home, relative foster home, pending license, residential facility, respite care, shelter care and substance abuse facility. This is not exclusively child welfare placement.

Teen Assertive Community Treatment (Teen Act, (TA))

Table 1. Number and percent of youth and caregivers who started TA between 7/1/14-11/30/15, by age.

Age group	N	%
Youth	59	100.0%
0 – 10	0	0.0%
11 – 17	46	78.0%
18 – 21	13	22.0%
Caregiver (18+)	0	0.0%
Total	59	100.0%

Table 2. Number and percent of youth who started TA between 7/1/14-11/30/15, by placement type at the start of TA.

Placement*	N	%
Started TA in-home	36	61.0%
Started TA out-of-home	23	39.0%
Total	59	100.0%

Figure 1. Demographics of youth who started TA from in-home between 7/1/14-11/30/15 (N=36)

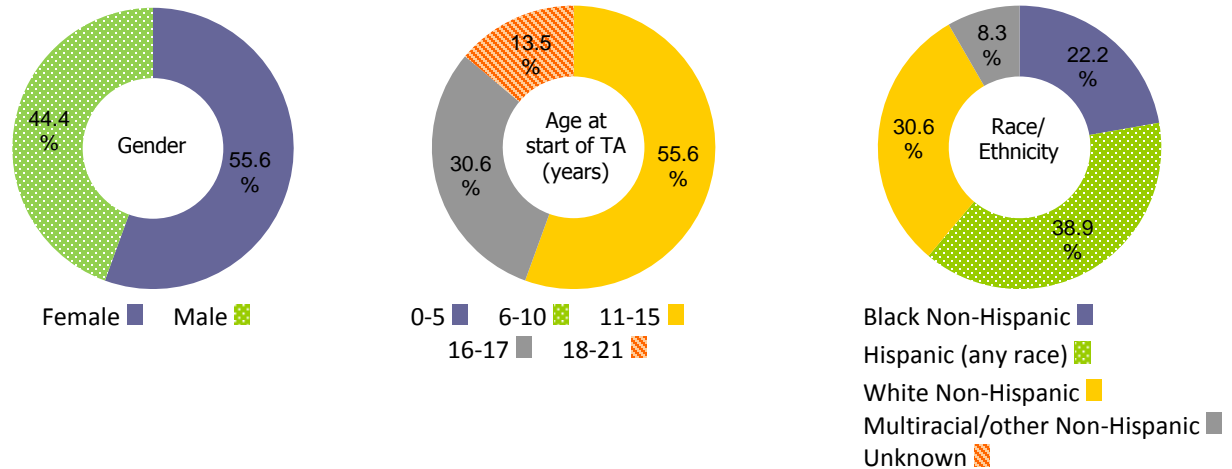


Table 3. Six-month follow-up of youth who started TA from in-home between 7/1/14-11/30/15, by age and selected outcomes. (N=36)

Age group	Total number of youth	Removal from home			CPS investigation			Indication of maltreatment			Stay at RITS			Adjudication		
		N	% (row)	Median days	N	% (row)	Median days	N	% (row)	Median days	N	% (row)	Median days	N	% (row)	Median days
0 – 10	0	-	-	-	-	-	-	-	-	-	-	-	-	-	-	-
11 – 17	31	3	9.7%	66.0	5	16.1%	112.0	1	3.2%	29.0	2	6.5%	95.5	0	0.0%	-
18 – 21	5	1	20.0%	21.0	0	0.0%	-	0	0.0%	-	0	0.0%	-	0	0.0%	-
Total	36	4	11.1%	46.5	5	13.9%	112.0	1	2.8%	29.0	2	5.6%	95.5	0	0.0%	-

NOTES:

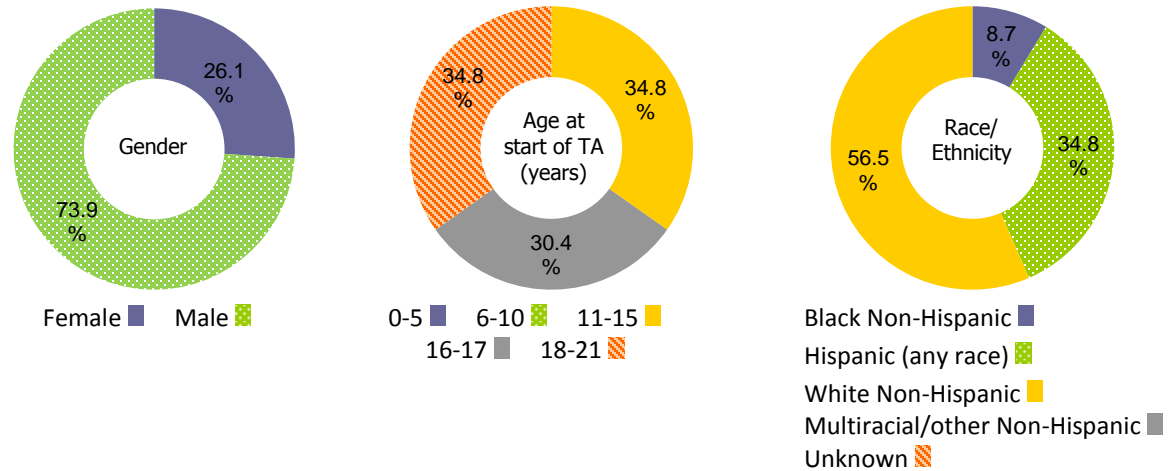
- Six month follow-up period begins on the service start date.
- A youth may be counted in more than one outcome category, if a youth experienced multiple outcomes within the 6 month period.
- Median length of time (in days) between the start of TA and the selected outcome.
- Depending on the length of time a youth received TA, a youth may or may not have been receiving TA at the time of experiencing the outcome. Youth may have ended TA any time before or after experiencing a selected outcome.
- In-home placements defined in this report include living arrangement of stay with friend, guardian, married parents, relatives, separated couple, single female parent, single male parent, subsidized adoption, and unmarried couple. This is not exclusively child welfare placement.

Teen Assertive Community Treatment (Teen Act, (TA))

Table 4. Six-month follow-up of youth who started TA from out-of-home between 7/1/14-11/30/15, by age and selected outcomes. (N=23)

Age group	Total number of youth	Discharge from all out-of-home placements		
		N	% (row)	Median days
0 – 10	0	-	-	-
11 – 17	15	5	33.3%	9.0
18 – 21	8	2	25.0%	62.5
Total	23	7	30.4%	10.0

Figure 2. Demographics of youth who started TA from out-of-home between 7/1/14-11/30/15 (N=23)



NOTES:

- Six month follow-up period begins on the service start date.
- A youth may be counted in more than one outcome category, if a youth experienced multiple outcomes within the 6 month period.
- Median length of time (in days) between the start of TA and the selected outcome.
- Depending on the length of time a youth received TA, a youth may or may not have been receiving TA at the time of discharge. Youth may have ended TA any time before or after discharging from all out-of-home placements.
- Out-of-home placements defined in this report include living arrangement of AWOL, group home, independent living (funded), non-relative foster – pending license, non-relative foster home, pre-adoptive home, private agency foster care, relative foster home, relative foster home, pending license, residential facility, respite care, shelter care and substance abuse facility. This is not exclusively child welfare placement.

Family Centered Treatment (FCT)

Table 1. Number and percent of youth and caregivers who started FCT between 7/1/14-11/30/15, by age.

Age group	N	%
Youth	62	98.4%
0 – 10	25	39.7%
11 – 17	35	55.5%
18 – 21	2	3.2%
Caregiver (18+)	1	1.6%
Total	63	100.0%

Table 2. Number and percent of youth who started FCT between 7/1/14-11/30/15, by placement type at the start of FCT.

Placement	N	%
Started FCT in-home	36	58.1%
Started FCT out-of-home	26	41.9%
Total	62	100.0%

Figure 1. Demographics of youth who started FCT from in-home between 7/1/14-11/30/15 (N=36)

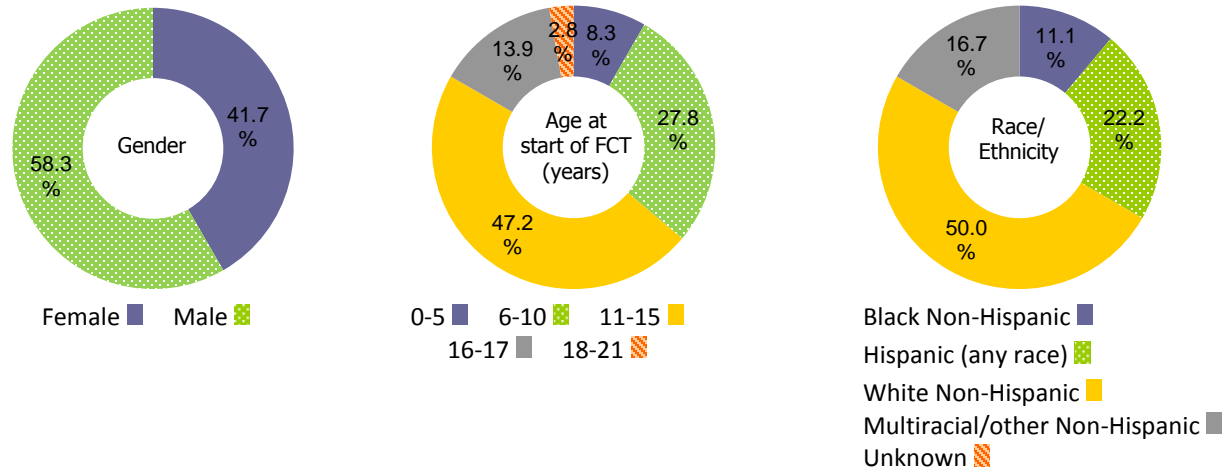


Table 3. Six-month follow-up of youth who started FCT from in-home between 7/1/14-11/30/15, by age and selected outcomes. (N=36)

Age group	Total number of youth	Removal from home			CPS investigation			Indication of maltreatment			Stay at RITS			Adjudication		
		N	% (row)	Median days	N	% (row)	Median days	N	% (row)	Median days	N	% (row)	Median days	N	% (row)	Median days
0 – 10	13	0	0.0%	-	3	23.1%	113.0	1	7.7%	155.0	0	0.0%	-	0	0.0%	-
11 – 17	22	4	18.2%	75.0	0	0.0%	-	0	0.0%	-	4	18.2%	91.5	1	4.6%	177.0
18 – 21	1	1	100.0%	154.0	0	0.0%	-	0	0.0%	-	0	0.0%	-	0	0.0%	-
Total	36	5	13.9%	90.0	3	8.3%	113.0	1	2.8%	155.0	4	11.1%	91.5	1	2.8%	177.0

NOTES:

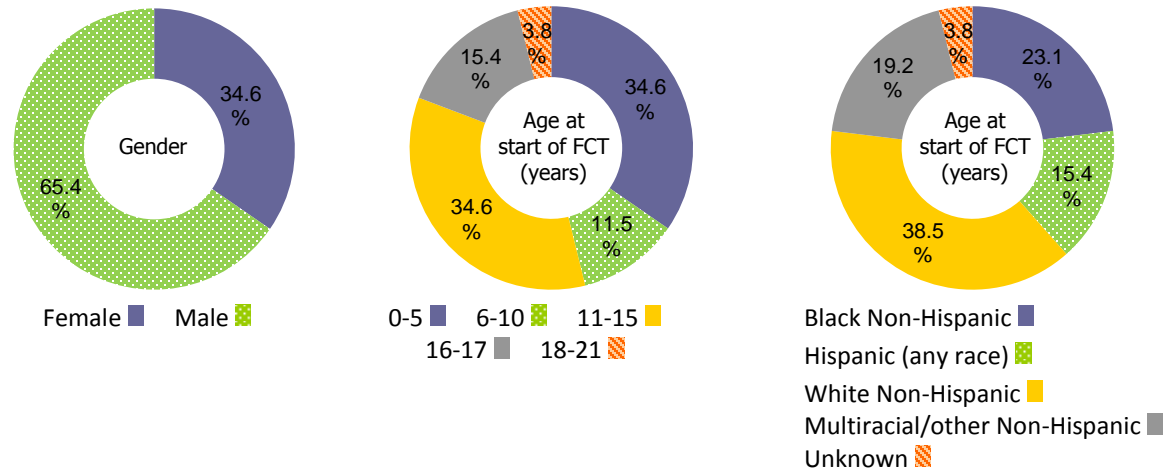
- Six month follow-up period begins on the service start date.
- A youth may be counted in more than one outcome category, if a youth experienced multiple outcomes within the 6 month period.
- Median length of time (in days) between the start of FCT and the selected outcome.
- Depending on the length of time a youth received FCT, a youth may or may not have been receiving FCT at the time of experiencing the outcome. Youth may have ended FCT any time before or after experiencing a selected outcome.
- In-home placements defined in this report include living arrangement of stay with friend, guardian, married parents, relatives, separated couple, single female parent, single male parent, subsidized adoption, and unmarried couple. This is not exclusively child welfare placement.

Family Centered Treatment (FCT)

Table 4. Six-month follow-up of youth who started FCT from out-of-home between 7/1/14-11/30/15, by age and selected outcomes. (N=26)

Age group	Total number of youth	Discharge from all out-of-home placements		
		N	% (row)	Median days
0 – 10	12	3	25.0%	48.0
11 – 17	13	8	61.5%	23.5
18 – 21	1	1	100.0%	83.0
Total	26	12	46.2%	42.5

Figure 2. Demographics of youth who started FCT from out-of-home between 7/1/14-11/30/15 (N=26)



NOTES:

- Six month follow-up period begins on the service start date.
- A youth may be counted in more than one outcome category, if a youth experienced multiple outcomes within the 6 month period.
- Median length of time (in days) between the start of FCT and the selected outcome.
- Depending on the length of time a youth received FCT, a youth may or may not have been receiving FCT at the time of discharge. Youth may have ended FCT any time before or after discharging from all out-of-home placements.
- Out-of-home placements defined in this report include living arrangement of AWOL, group home, independent living (funded), non-relative foster – pending license, non-relative foster home, pre-adoptive home, private agency foster care, relative foster home, relative foster home, pending license, residential facility, respite care, shelter care and substance abuse facility. This is not exclusively child welfare placement.

Positive Parenting Program (Triple P, (TP))

Table 1. Number and percent of youth and caregivers who started TP between 7/1/14-11/30/15, by age.

Age group	N	%
Youth	73	100.0%
0 – 10	68	93.1%
11 – 17	5	6.9%
18 – 21	0	0.0%
Caregiver (18+)	0	0.0%
Total	73	100.0%

Table 2. Number and percent of youth who started TP between 7/1/14-11/30/15, by placement type at the start of TP.

Placement	N	%
Started TP in-home	28	38.4%
Started TP out-of-home	45	61.6%
Total	73	100.0%

Figure 1. Demographics of youth who started TP from in-home between 7/1/14-11/30/15 (N=28)

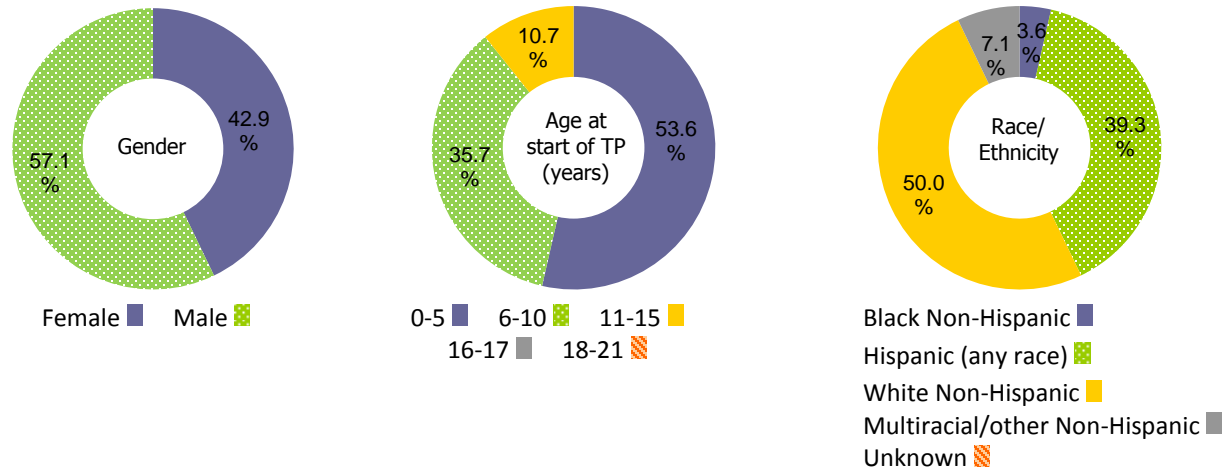


Table 3. Six-month follow-up of youth who started TP from in-home between 7/1/14-11/30/15, by age and selected outcomes. (N=28)

Age group	Total number of youth	Removal from home			CPS investigation			Indication of maltreatment			Stay at RITS			Adjudication		
		N	% (row)	Median days	N	% (row)	Median days	N	% (row)	Median days	N	% (row)	Median days	N	% (row)	Median days
0 – 10	25	5	20.0%	128.0	4	16.0%	54.0	2	8.0%	93.5	0	0.0%	-	0	0.0%	-
11 – 17	3	0	0.0%	-	0	0.0%	-	0	0.0%	-	0	0.0%	-	0	0.0%	-
18 – 21	0	-	-	-	-	-	-	-	-	-	-	-	-	-	-	-
Total	28	5	17.9%	128.0	4	14.3%	54.0	2	7.1%	93.5	0	0.0%	-	0	0.0%	-

NOTES:

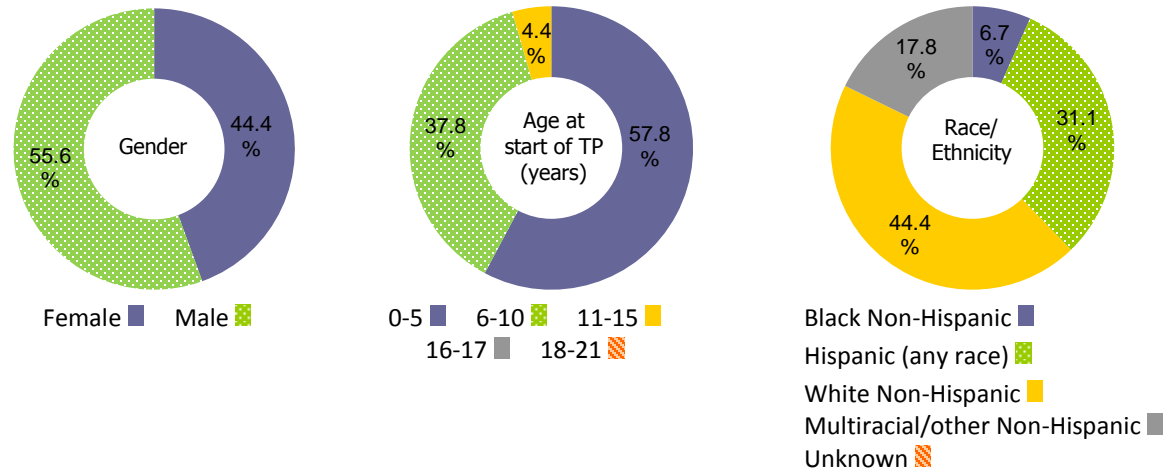
- Six month follow-up period begins on the service start date.
- A youth may be counted in more than one outcome category, if a youth experienced multiple outcomes within the 6 month period.
- Median length of time (in days) between the start of TP and the selected outcome.
- Depending on the length of time a youth received TP, a youth may or may not have been receiving TP at the time of experiencing the outcome. Youth may have ended TP any time before or after experiencing a selected outcome.
- In-home placements defined in this report include living arrangement of stay with friend, guardian, married parents, relatives, separated couple, single female parent, single male parent, subsidized adoption, and unmarried couple. This is not exclusively child welfare placement.

Positive Parenting Program (Triple P, (TP))

Table 4. Six-month follow-up of youth who started TP from out-of-home between 7/1/14-11/30/15, by age and selected outcomes. (N=45)

Age group	Total number of youth	Discharge from all out-of-home placements		
		N	% (row)	Median days
0 – 10	43	13	30.2%	84.0
11 – 17	2	0	0.0%	-
18 – 21	0	-	-	-
Total	45	13	28.9%	84.0

Figure 2. Demographics of youth who started TP from out-of-home between 7/1/14-11/30/15 (N=45)



NOTES:

- Six month follow-up period begins on the service start date.
- A youth may be counted in more than one outcome category, if a youth experienced multiple outcomes within the 6 month period.
- Median length of time (in days) between the start of TP and the selected outcome.
- Depending on the length of time a youth received TP, a youth may or may not have been receiving TP at the time of discharge. Youth may have ended TP any time before or after discharging from all out-of-home placements.
- Out-of-home placements defined in this report include living arrangement of AWOL, group home, independent living (funded), non-relative foster – pending license, non-relative foster home, pre-adoptive home, private agency foster care, relative foster home, relative foster home, pending license, residential facility, respite care, shelter care and substance abuse facility. This is not exclusively child welfare placement.

RI Department of Children, Youth and Families (RI DCYF)
Community Based Services – Visitation Center
July 1, 2012 – June 30, 2014 (FY13-FY14)

This page reflects children who started Visitation Center (VC) in FY13-FY14. The children who started Visitation Center from an out-of-home placement were followed for a year from the service start to see if they reunified with parents or achieved other types of permanency after receiving the service. Then, those who reunified with parents were followed for another six months upon reunification to home to see if they experienced any of these selected outcomes after returning home: 1) subsequent removal from home, 2) CPS investigation, 3) indication of maltreatment, 4) stay at RITS and/or 5) adjudication.

Table 1. Number and percent of youth who started Visitation Center through RI DCYF in FY13-FY14, by placement type at the start of the service and age. (N=131)

Placement	Age						Total	
	0 – 10		11 – 17		18 – 21			
	N	%	N	%	N	%	N	%
Started service in-home	5	4.1%	0	0.0%	0	0.0%	5	3.8%
Started service out-of-home	116	95.9%	10	100.0%	0	0.0%	126	96.2%
Total	121	100.0%	10	100.0%	0	0.0%	131	100.0%

NOTES:
- In-home placements defined in this report include living arrangement of stay with friend, guardian, married parents, relatives, separated couple, single female parent, single male parent, subsidized adoption, and unmarried couple. This is not exclusively child welfare placement.
- Out-of-home placements defined in this report include AWOL, group home, independent living (funded or unfunded), relative foster home, relative foster home – pending license, non-relative foster home, private agency foster care, pre-adoptive home, residential facility, respite care, shelter care, substance abuse facility, and other. This is not exclusively child welfare placement.

Table 2. Number and percent of youth who started Visitation Center from out-of-home in FY13-FY14, by discharge status and age. (N=126)

Discharge status	Age						Total	
	0 – 10		11 – 17		18 – 21			
	N	%	N	%	N	%	N	%
Discharged within 12 months of starting VC	44	37.9%	7	70.0%	0	0.0%	51	40.5%
Not discharge within 12months of starting VC	72	62.1%	3	30.0%	0	0.0%	75	59.5%
Total	116	100.0%	10	100.0%	0	0.0%	126	100.0%

Table 3. Number, percent and median length of time to discharge among youth who started Visitation Center from out-of-home in FY13-FY14 and discharged within 12 months of starting the service, by age and discharge reason. (N=51)

	N	%	Median length of time between start of VC and discharge* (Days)
Age			
0 – 10	44	86.3%	130.0
11 – 17	7	13.7%	60.0
18 – 21	0	0.0%	-
Discharge Reason			
Reunification with parents	47	92.2%	113.0
Guardianship	2	3.9%	213.0
Direct consent adoption	2	3.9%	242.5
Total	51	100.0%	114.0

NOTE: Depending on the length of time a youth received VC, a youth may or may not have been receiving VC at the time of discharge. Youth may have ended VC any time before or after discharging from all out-of-home placements.

Visitation Center (VC)

Figure 1. Demographics of youth who started Visitation Center from out-of-home in FY13-FY14 and reunified with parents within 12 months of starting Visitation Center. (N=47)

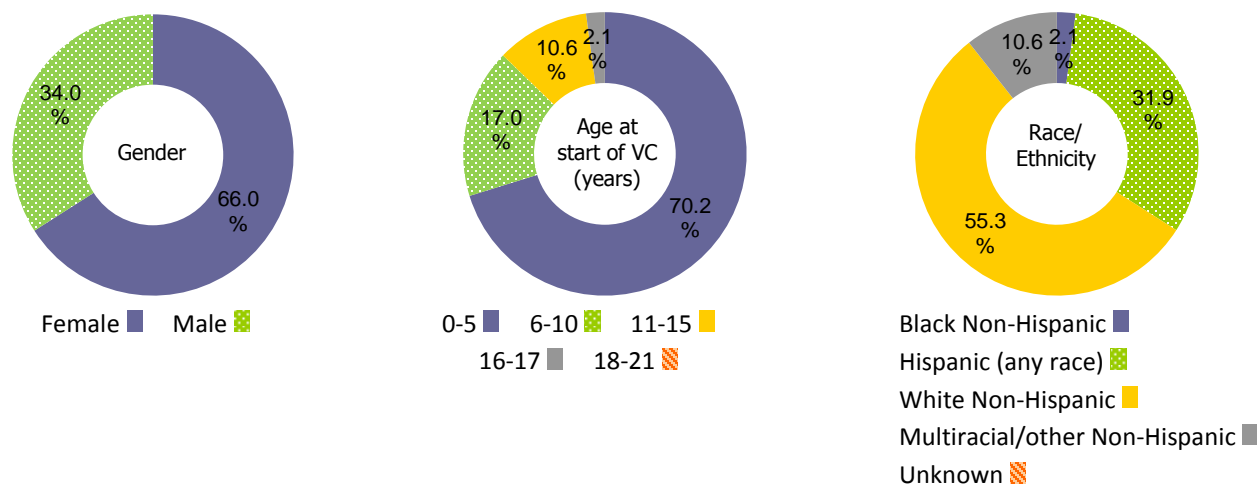


Table 4. Six-month outcomes of youth who started VC from out-of-home in FY13-FY14 and reunified with parents within 12 months of starting the service, by age and selected outcomes. (N=47)

Age group	Total number of youth	Removal from home			CPS investigation			Indication of maltreatment			Stay at RITS			Adjudication		
		N	% (row)	Median days	N	% (row)	Median days	N	% (row)	Median days	N	% (row)	Median days	N	% (row)	Median days
0 – 10	41	7	17.1%	108.0	10	24.4 %	69.0	3	7.3 %	132.0	0	0.0%	-	0	0.0%	-
11 – 17	6	0	0.0%	-	2	33.3%	114.0	2	33.3%	114.0	0	0.0%	-	0	0.0%	-
18 – 21	0	-	-	-	-	-	-	-	-	-	-	-	-	-	-	-
Total	47	7	14.9%	108.0	12	25.5%	75.5	5	10.6%	114.0	0	0.0%	-	0	0.0%	-

NOTES:

- Six month follow-up period begins the day child returns home upon reunification with parents.
- A youth may be counted in more than one outcome category, if a youth experienced multiple outcomes within the 6 month period.
- Median length of time (in days) between the start of FP and the selected outcome.
- Depending on the length of time a youth received VC, a youth may or may not have been receiving VC at the time of experiencing the outcome. Youth may have ended VC any time before or after experiencing a selected outcome.
- Out-of-home placements defined in this report include living arrangement of AWOL, group home, independent living (funded), non-relative foster – pending license, non-relative foster home, pre-adoptive home, private agency foster care, relative foster home, relative foster home, pending license, residential facility, respite care, shelter care and substance abuse facility. This is not exclusively child welfare placement.

Appendix

Table 1. Number and percent of youth and caregivers who started at least one type of community based services (both in-home and out-of-home) through RI DCYF between 7/1/14-11/30/15, by service type and age. (N=1,781)

Service type	Age								Total	
	Youth (0 – 10)		Youth (11 – 17)		Youth (18 – 21)		Caregiver (18 +)			
	N	%	N	%	N	%	N	%	N	%
Counseling – Mental Health (Group/Individual)	4	0.9%	9	0.9%	3	6.0%	142	54.6%	158	8.9%
Counseling – Sexual Abuse (Group/Individual & Family)	6	1.3%	8	0.8%	0	0.0%	8	3.1%	22	1.2%
Counseling – Substance Abuse (Group/Individual)	0	0.0%	6	0.6%	0	0.0%	41	15.8%	47	2.6%
Education Programs	1	0.2%	9	0.9%	1	2.0%	2	0.8%	13	0.7%
Enhanced Family Support Services	131	29.4%	256	25.0%	18	36.0%	2	0.8%	407	22.8%
Family Centered Treatment	25	5.6%	35	3.4%	2	4.0%	1	0.4%	63	3.5%
Family Preservation	50	11.2%	35	3.4%	0	0.0%	0	0.0%	85	4.8%
Home Based Treatment	3	0.7%	42	4.1%	0	0.0%	0	0.0%	45	2.5%
Multisystemic Therapy	0	0.0%	178	17.3%	0	0.0%	1	0.4%	179	10.1%
Outreach and Tracking	7	1.6%	119	11.6%	5	10.0%	0	0.0%	131	7.4%
Parent Aide/Education	11	2.5%	5	0.5%	0	0.0%	60	23.1%	76	4.3%
Preserving Family Networks	11	2.5%	171	16.7%	4	8.0%	3	1.1%	189	10.6%
Respite	72	16.1%	9	0.9%	2	4.0%	0	0.0%	83	4.7%
Trauma Systems Therapy (TST)	57	12.8%	92	9.0%	2	4.0%	0	0.0%	151	8.5%
Teen Assertive Community Treatment (Teen ACT)	0	0.0%	46	4.5%	13	26.0%	0	0.0%	59	3.3%
Positive Parenting Program (Triple P)	68	15.2%	5	0.5%	0	0.0%	0	0.0%	73	4.1%
Total	446	100.0%	1025	100.0%	50	100.0%	260	100.0%	1781	100.0%

NOTES:

- Highlighted are the number and percent of most frequently used service types, by age.

- TST includes both community based and residential services. TST community based indicates service began in-home. TST residential indicates service began out-of-home but a child could have continued into community

Appendix

Table 2. Selected outcomes of youth who started a community based service from in-home between 7/1/14-11/30/15, by service type, age and selected outcomes. (N=965)

	Total number of youth	Removal from home		CPS investigation		Indication of maltreatment		Stay at RITS		Adjudication	
		N	% (row)	N	% (row)	N	% (row)	N	% (row)	N	% (row)
Service type											
Counseling – Mental Health (Group/Individual)	6	0	0.0%	0	0.0%	0	0.0%	0	0.0%	0	0.0%
Counseling – Sexual Abuse (Group/Individual & Family)	12	0	0.0%	0	0.0%	0	0.0%	1	8.3%	0	0.0%
Counseling – Substance Abuse (Group/Individual)	5	0	0.0%	0	0.0%	0	0.0%	0	0.0%	0	0.0%
Education Programs	2	0	0.0%	0	0.0%	0	0.0%	0	0.0%	0	0.0%
Enhanced Family Support Services	262	37	14.1%	24	9.2%	5	1.9%	17	6.5%	5	1.9%
Family Centered Treatment	36	5	13.9%	3	8.3%	1	2.8%	4	11.1%	1	2.8%
Family Preservation	47	7	14.9%	5	10.6%	2	4.3%	0	0.0%	0	0.0%
Home Based Treatment	44	6	13.6%	7	15.9%	2	4.6%	0	0.0%	0	0.0%
Multisystemic Therapy	141	33	23.4%	11	7.8%	2	1.4%	19	13.5%	7	5.0%
Outreach and Tracking	102	13	12.8%	7	6.9%	3	2.9%	8	7.8%	1	1.0%
Parent Aide/Education	5	1	20.0%	1	20.0%	1	20.0%	0	0.0%	0	0.0%
Preserving Family Networks	152	25	16.5%	15	9.9%	3	2.0%	25	16.5%	12	7.9%
Respite	21	0	0.0%	1	4.8%	0	0.0%	0	0.0%	0	0.0%
Trauma Systems Therapy (TST)	66	14	21.2%	5	7.6%	0	0.0%	4	6.1%	1	1.5%
Teen Assertive Community Treatment (Teen ACT)	36	4	11.1%	5	13.9%	1	2.8%	2	5.6%	0	0.0%
Positive Parenting Program (Triple P)	28	5	17.9%	4	14.3%	2	7.1%	0	0.0%	0	0.0%
Age group											
0 – 10	182	28	15.4%	20	11.0%	9	5.0%	0	0.0%	0	0.0%
11 – 17	759	119	15.7%	68	9.0%	13	1.7%	79	10.4%	26	3.4%
18 – 21	24	3	12.5%	0	0.0%	0	0.0%	1	4.2%	1	4.2%
Total	965	150	15.5%	88	9.1%	22	2.3%	80	8.3%	27	2.8%

NOTES:

- Six month follow-up period begins on the service start date.
- Highlighted are the most frequently used service types for youth who started a community based service from in-home between 7/1/14-11/30/15.
- A youth may be counted in more than one outcome category, if a youth experienced multiple outcomes within the 6 month period.
- Depending on the length of time a youth received a service, a youth may or may not have been receiving the service at the time of experiencing the outcome. Youth may have ended the service any time before or after experiencing a selected outcome.
- In-home placements defined in this report include living arrangement of stay with friend, guardian, married parents, relatives, separated couple, single female parent, single male parent, subsidized adoption, and unmarried couple. This is not exclusively child welfare placement.
- TST includes both community based and residential services. TST community based indicates service began in-home. TST residential indicates service began out-of-home but a child could have continued into community

Appendix

Table 3. Median length of time (Days) between start of a service and selected six-month outcomes for youth who started a community based service from in-home between 7/1/14-11/30/15, by service type and age. (N=965)

	Removal from home		CPS investigation		Indication of maltreatment		Stay at RITS		Adjudication	
	N	Days	N	Days	N	Days	N	Days	N	Days
Service type										
Counseling – Mental Health (Group/Individual)	0	-	0	-	0	-	0	-	0	-
Counseling – Sexual Abuse (Group/Individual & Family)	0	-	0	-	0	-	1	173.0	0	-
Counseling – Substance Abuse (Group/Individual)	0	-	0	-	0	-	0	-	0	-
Education Programs	0	-	0	-	0	-	0	-	0	-
Enhanced Family Support Services	37	60.0	24	69.5	5	76.0	17	59.0	5	50.0
Family Centered Treatment	5	90.0	3	113.0	1	155.0	4	91.5	1	177.0
Family Preservation	7	27.0	5	75.0	2	84.0	0	-	0	-
Home Based Treatment	6	88.5	7	150.0	2	109.5	0	-	0	-
Multisystemic Therapy	33	85.0	11	59.0	2	133.0	19	82.0	7	89.0
Outreach and Tracking	13	93.0	7	64.0	3	73.0	8	102.0	1	125.0
Parent Aide/Education	1	119.0	1	119.0	1	119.0	0	-	0	-
Preserving Family Networks	25	63.0	15	40.0	3	52.0	25	85.0	12	90.5
Respite	0	-	1	57.0	0	-	0	-	0	-
Trauma Systems Therapy (TST)	14	89.5	5	83.0	0	-	4	63.5	1	69.0
Teen Assertive Community Treatment (Teen ACT)	4	46.5	5	112.0	1	29.0	2	95.5	0	-
Positive Parenting Program (Triple P)	5	128.0	4	54.0	2	93.5	0	-	0	-
Age group										
0 – 10	28	60.5	20	74.0	9	119.0	0	-	0	-
11 – 17	119	78.0	68	65.5	13	73.0	79	82.0	26	89.0
18 – 21	3	132.0	0	-	0	-	1	23.0	1	41.0
Total	150	77.5	88	65.5	22	74.0	80	81.5	27	89.0

NOTES:

- A youth may be counted in more than one outcome category, if a youth experienced multiple outcomes within the 6 month period.
- Depending on the length of time a youth received a service, a youth may or may not have been receiving the service at the time of experiencing the outcome. Youth may have ended the service any time before or after experiencing a selected outcome.
- In-home placements defined in this report include living arrangement of stay with friend, guardian, married parents, relatives, separated couple, single female parent, single male parent, subsidized adoption, and unmarried couple. This is not exclusively child welfare placement.
- TST includes both community based and residential services. TST community based indicates service began in-home. TST residential indicates service began out-of-home but a child could have continued into community

Appendix

Table 4. Number, percent and median length of time (Days) between start of a service and discharge from all out-of-home placements among youth discharged within 6 months of starting a service from out-of-home between 7/1/14-11/30/15, by service type and age. (N=556)

	Total number of youth	N	% (row)	Median length of time (Days) between service start and discharge
Service type				
Counseling – Mental Health (Group/Individual)	10	1	10.0%	48.0
Counseling – Sexual Abuse (Group/Individual & Family)	2	0	0.0%	-
Counseling – Substance Abuse (Group/Individual)	1	1	100.0%	154.0
Education Programs	9	1	11.1%	153.0
Enhanced Family Support Services	143	57	39.9%	63.0
Family Centered Treatment	26	12	46.2%	42.5
Family Preservation	38	22	57.9%	43.5
Home Based Treatment	1	0	0.0%	-
Multisystemic Therapy	37	25	67.6%	30.0
Outreach and Tracking	29	10	34.5%	47.0
Parent Aide/Education	11	1	9.1%	178.0
Preserving Family Networks	34	20	58.8%	18.0
Respite	62	16	25.8%	74.0
Trauma Systems Therapy (TST)	85	23	27.1%	54.0
Teen Assertive Community Treatment (Teen ACT)	23	7	30.4%	10.0
Positive Parenting Program (Triple P)	45	13	28.9%	84.0
Age group				
0 – 10	264	83	31.4%	63.0
11 – 17	266	115	43.2%	40.0
18 – 21	26	11	42.3%	68.0
Total	556	209	37.6%	50.0

NOTES:

- Six month follow-up period begins on the service start date.
- Highlighted are the most frequently used service types for youth who started a community based service from out-of-home between 7/1/14-11/30/15.
- Depending on the length of time a youth received a service, a youth may or may not have been receiving the service at the time of discharge. Youth may have ended the service any time before or after discharging from all out-of-home placements.
- Out-of-home placements defined in this report include AWOL, group home, independent living (funded or unfunded), relative foster home, relative foster home – pending license, non-relative foster home, private agency foster care, pre-adoptive home, residential facility, respite care, shelter care, substance abuse facility, and other. This is not exclusively child welfare placement.
- TST includes both community based and residential services. TST community based indicates service began in-home. TST residential indicates service began out-of-home but a child could have continued into community