



Rhode Island Data Profile on Observed and National Performance, February 2024 Report

Rhode Island Department of Children, Youth & Families
Division of Performance Improvement

Outline

- Observed and National Performance Measures (NP) Timeframes and Files
- Permanency Indicators: RI Observed and Risk Standardized Performance Over Time: All Children
 - By Race and Ethnicity
- Safety Indicator: RI Observed and Risk Standardized Performance Over Time: All Children
 - By Race and Ethnicity

Rhode Island Data Profile: Federal Fiscal Year and Data Files

- Children's Bureau published State Data Profiles
- Data is from the Adoption and Foster Care Reporting System (AFCARS) and National Child Abuse and Neglect System (NCANDS)
- Foster Care is the Federal Definition – all out of home
- Federal Fiscal Year (FFY) begins October 1 and ends September 30
- State data submitted to the Children's Bureau is presented in terms of the Federal Year data file A and B
 - A file represents October 1-March 31
 - B file represents April 1-September 30
- Example: 19AB is FFY 19: spans October 1, 2018-September 30, 2019
- Example: 21B22A: spans: April 1, 2021-March 31, 2022

What is Risk Standardized Performance?

- Adjusts for Population Differences in Child Welfare Jurisdictions
- Adjusts based on certain population parameters\characteristics – for example - age, entry counts, other
- Adjusts to attempt to control for factors (differences in population characteristics) that are likely to influence the outcomes\results
- For example, some states have proportionally larger numbers of young children. Given the correlation between young age and higher prevalence of maltreatment, states are adjusted for age to reduce the disparate impact of age differences across states on outcomes
- Attempt is to allow for state comparisons however there is always an unknown amount of variance
- States should use their observed performance to monitor improvement over time within the state on CFSR safety and permanency data indicators

Risk Standardized Performance Color Representation

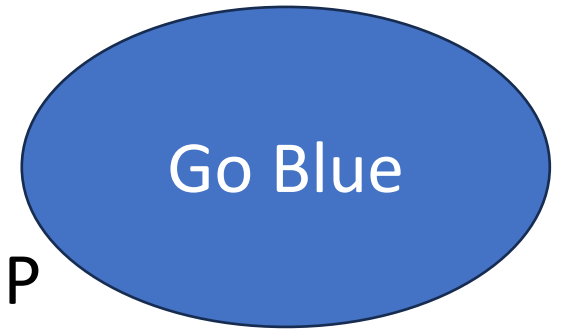
- Blue: State's performance is statistically better than national performance (NP)



- Grey: State's performance is statistically no different than NP



- Red: State's performance is statistically worse than NP



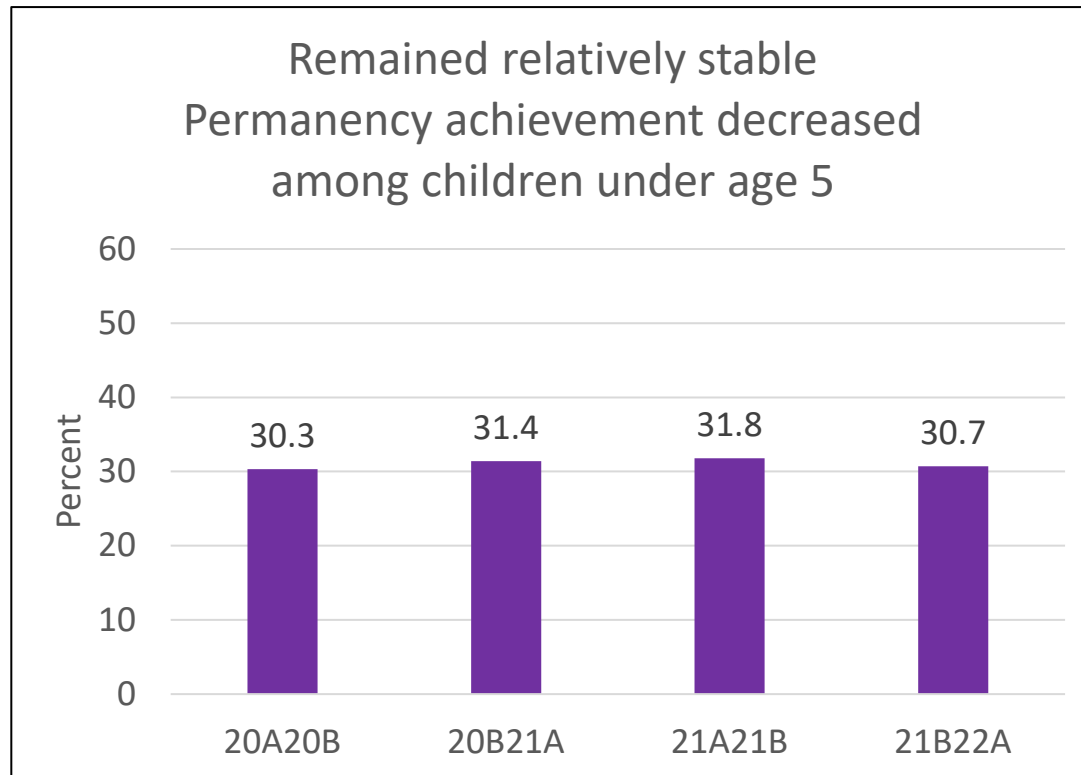
PERMANENCY INDICATORS



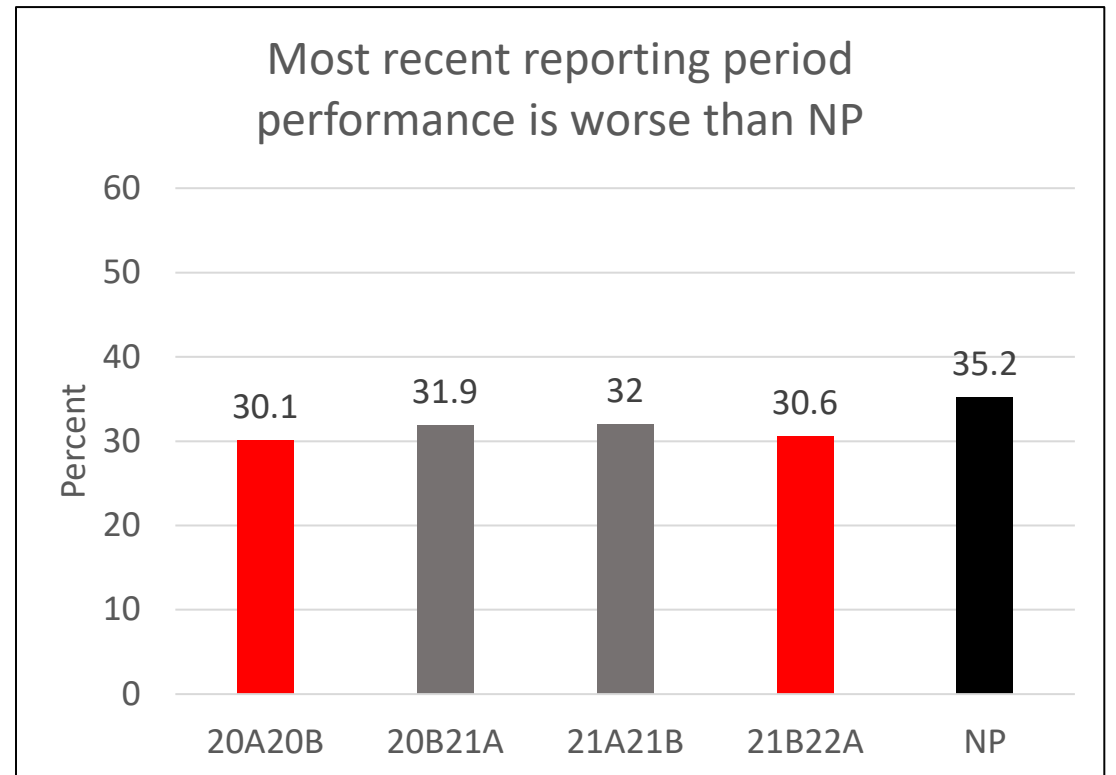
Permanency Achieved Within 12 months of Entry (Entry Cohort)

Blue: State's performance is statistically better than NP
Grey: State's performance is statistically no different than NP
Red: State's performance is statistically worse than NP

Observed

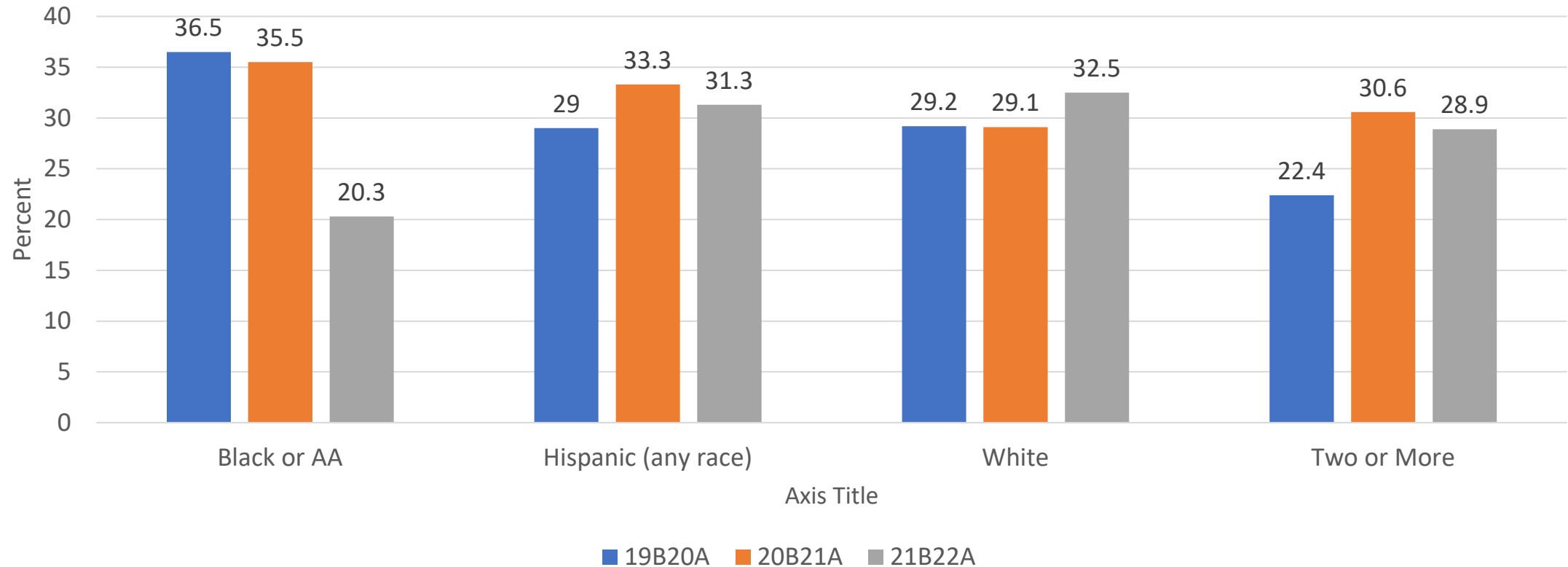


Risk Standardized Performance



Observed Performance Achieved Within 12 Months of Entry by Race and Ethnicity and Over Time

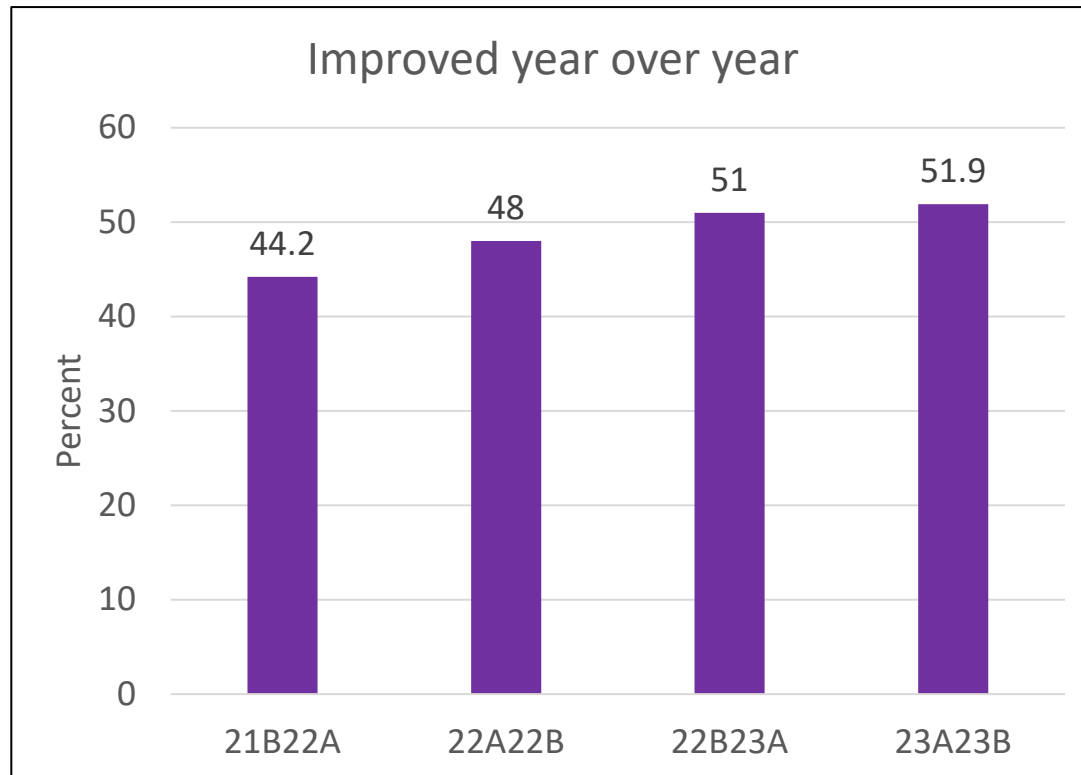
Among Race and Ethnicity Groups, Black or African American Decreased to the Lowest Percentage Over Time



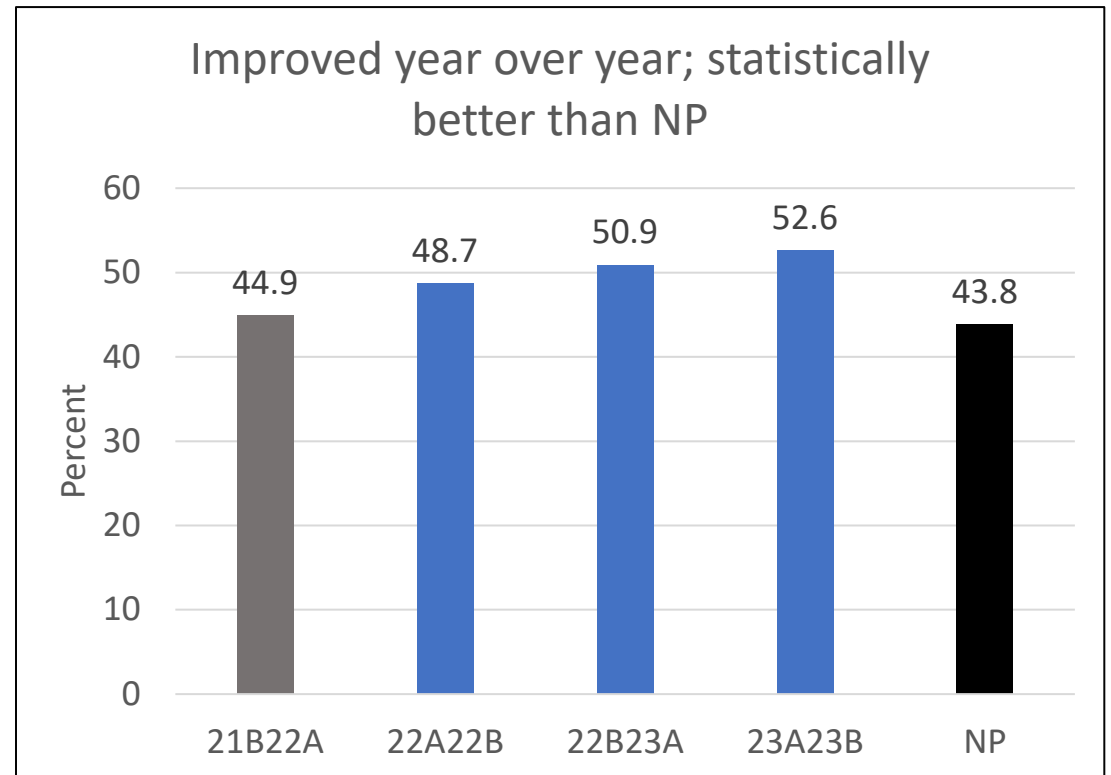
Permanency Achieved in 12 months (In Foster Care 12-23 months)

Blue: State's performance is statistically better than NP
Grey: State's performance is statistically no different than NP
Red: State's performance is statistically worse than NP

Observed

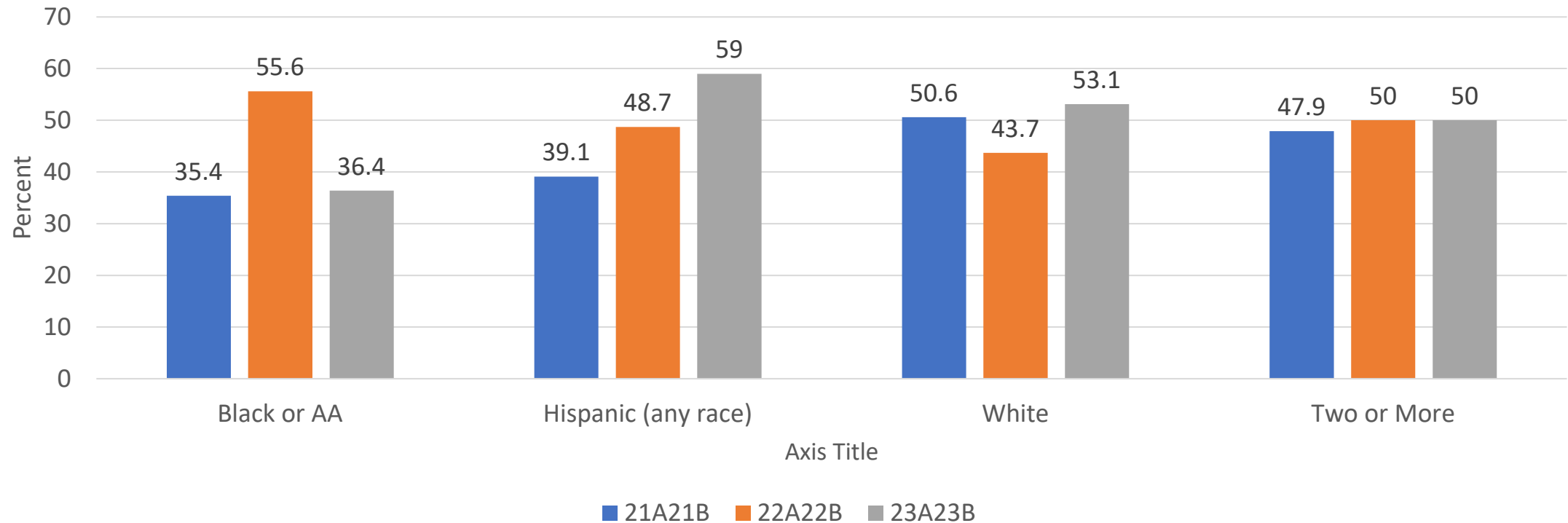


Risk Standardized Performance



Observed Performance Achieved in 12 Months In Care 12-23 months by Race and Ethnicity and Over Time

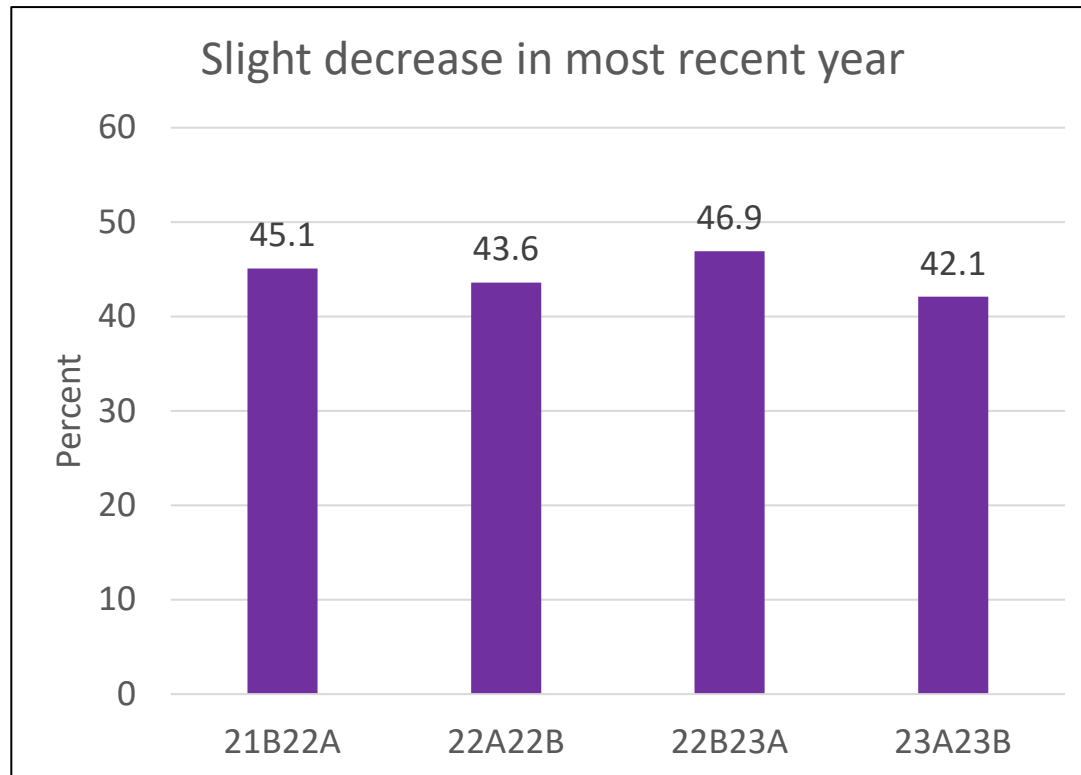
Among Race and Ethnicity Groups, Black or African American Decreased to the Lowest Percentage Over the Past Reporting Period (amid decreasing in achievement within 12 months)



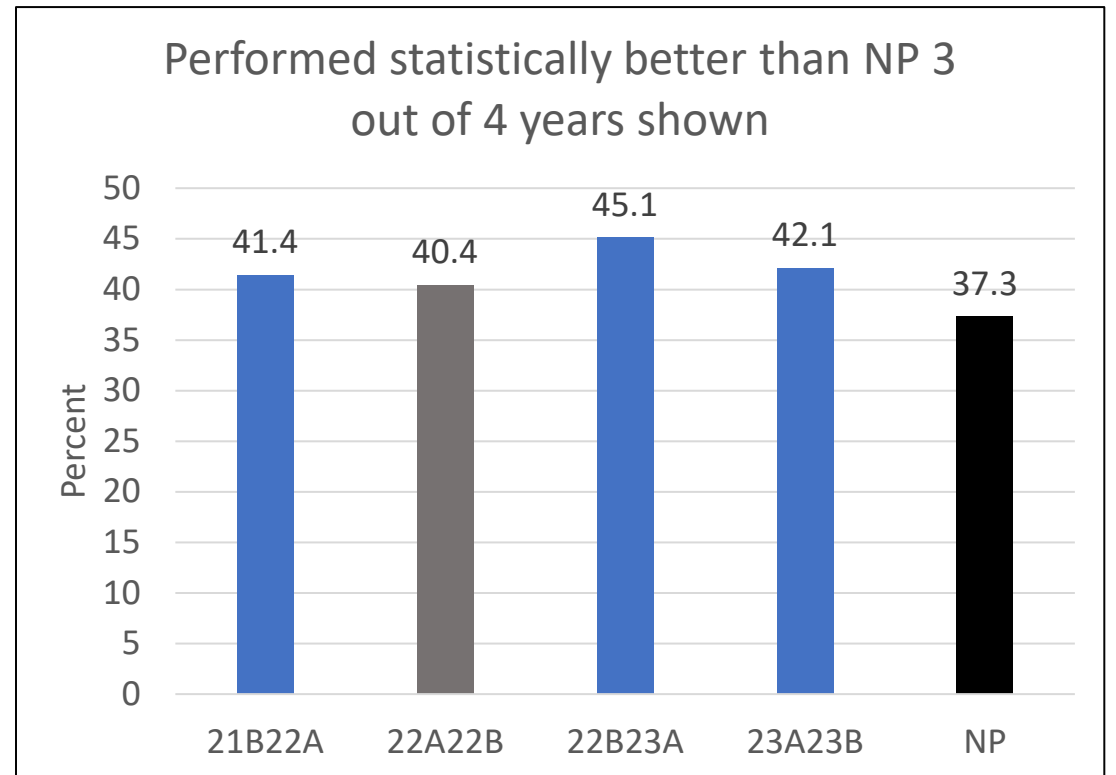
Permanency Achieved in 12 months (In Foster Care 24+ months)

Blue: State's performance is statistically better than NP
Grey: State's performance is statistically no different than NP
Red: State's performance is statistically worse than NP

Observed

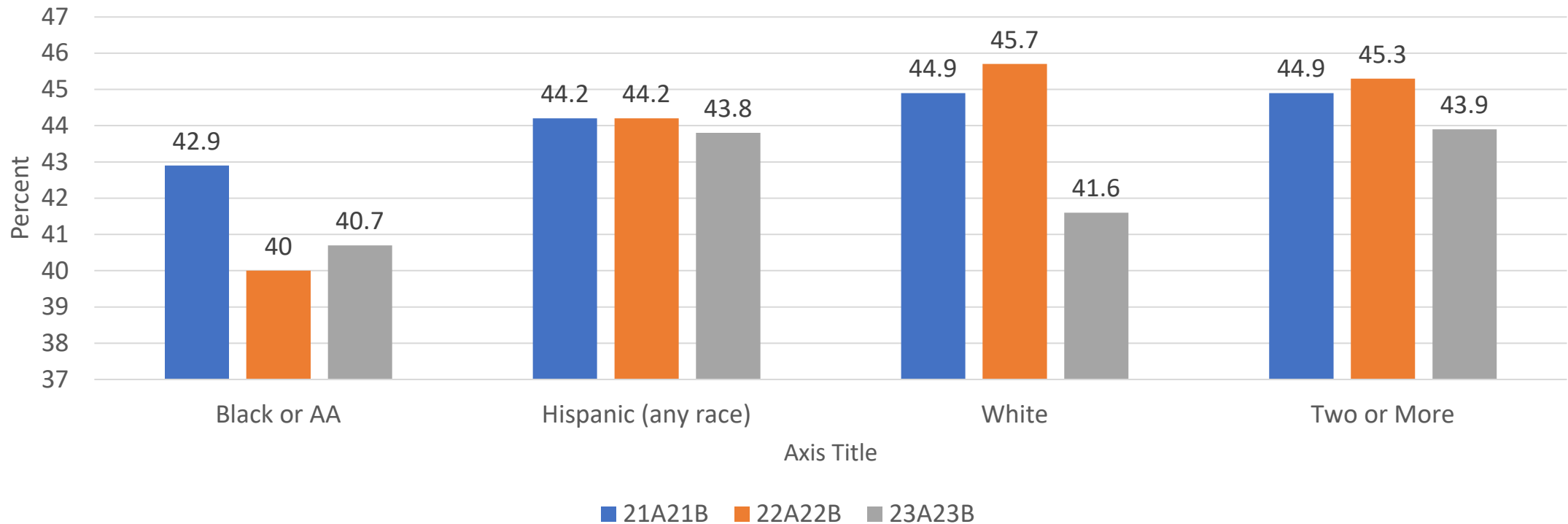


Risk Standardized Performance



Observed Performance Achieved in 12 Months (In Care 24+ months) by Race and Ethnicity and Over Time

Among Race and Ethnicity Groups, Black or African American Decreased to the Lowest Percentage Over Time (amid decreasing in achievement within 12 months and 12-23 months)

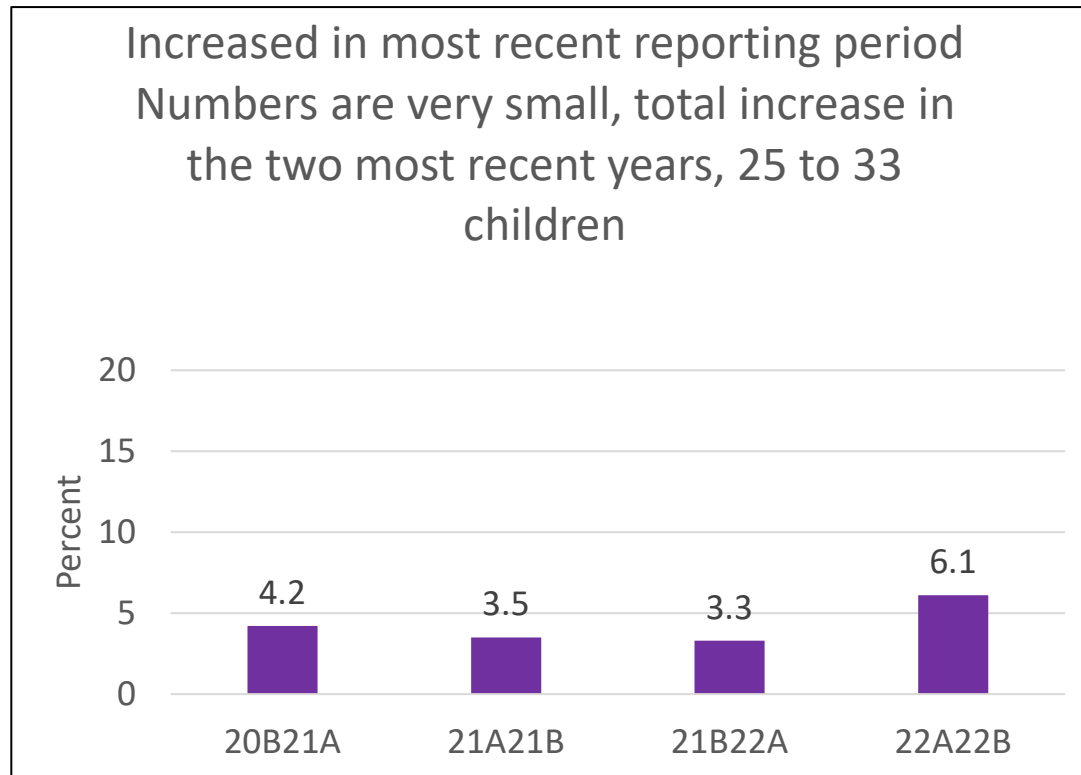


Re-entry Into Foster Care Within 12 Months of Previous Discharge

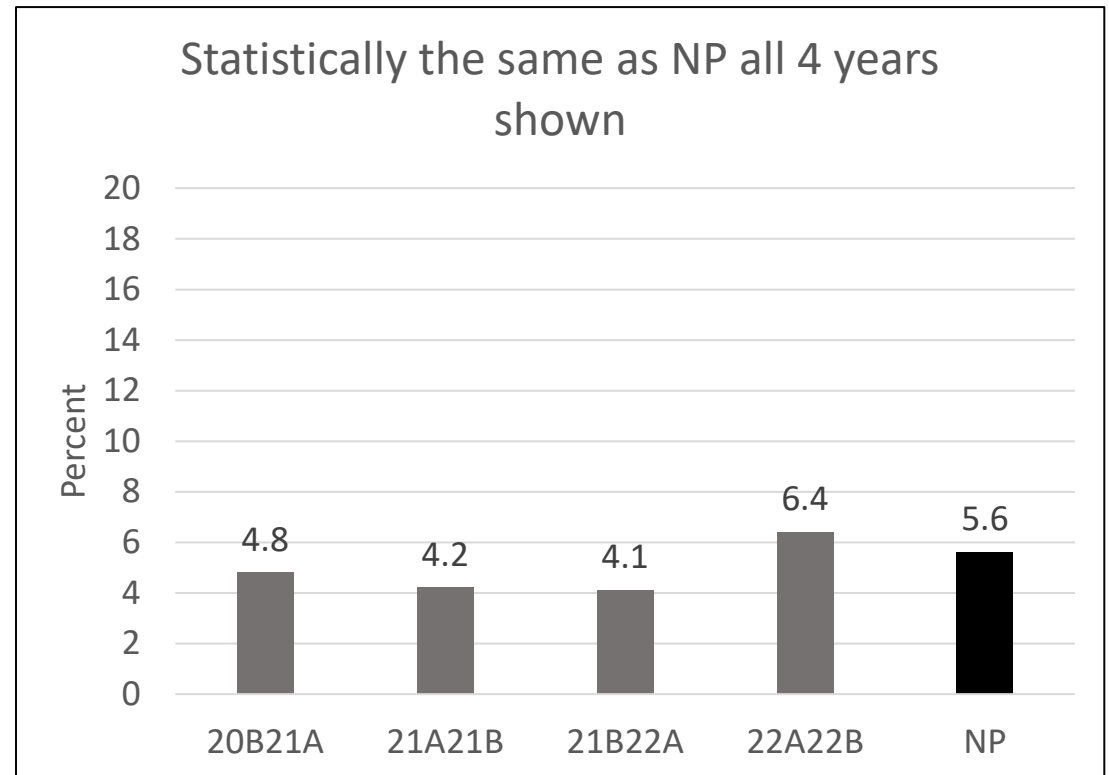
(lower is better)

Blue: State's performance is statistically better than NP
Grey: State's performance is statistically no different than NP
Red: State's performance is statistically worse than NP

Observed

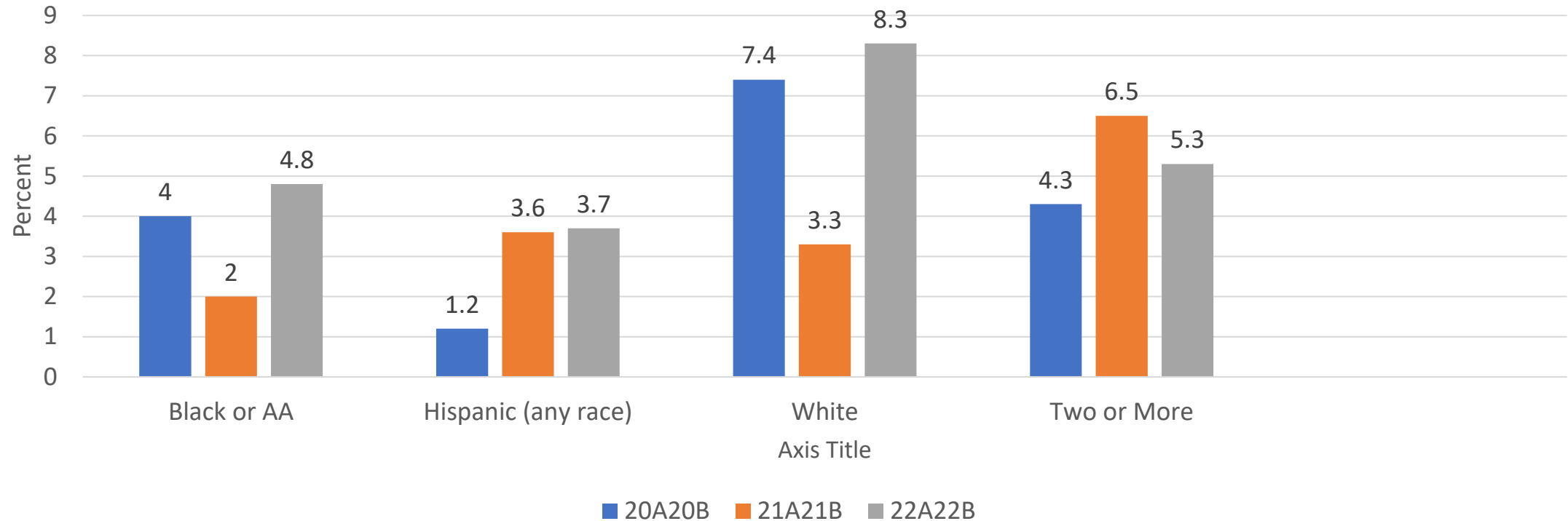


Risk Standardized Performance



Observed Performance of Re-entry Into Foster Care Within 12 Months of Previous Discharge by Race and Ethnicity and Over Time

*Among Race and Ethnicity Groups, White had the highest percentage of re-entry in two of the three time periods followed by Two or More Races
Number of re-entries is small, total in most recent year is 33*

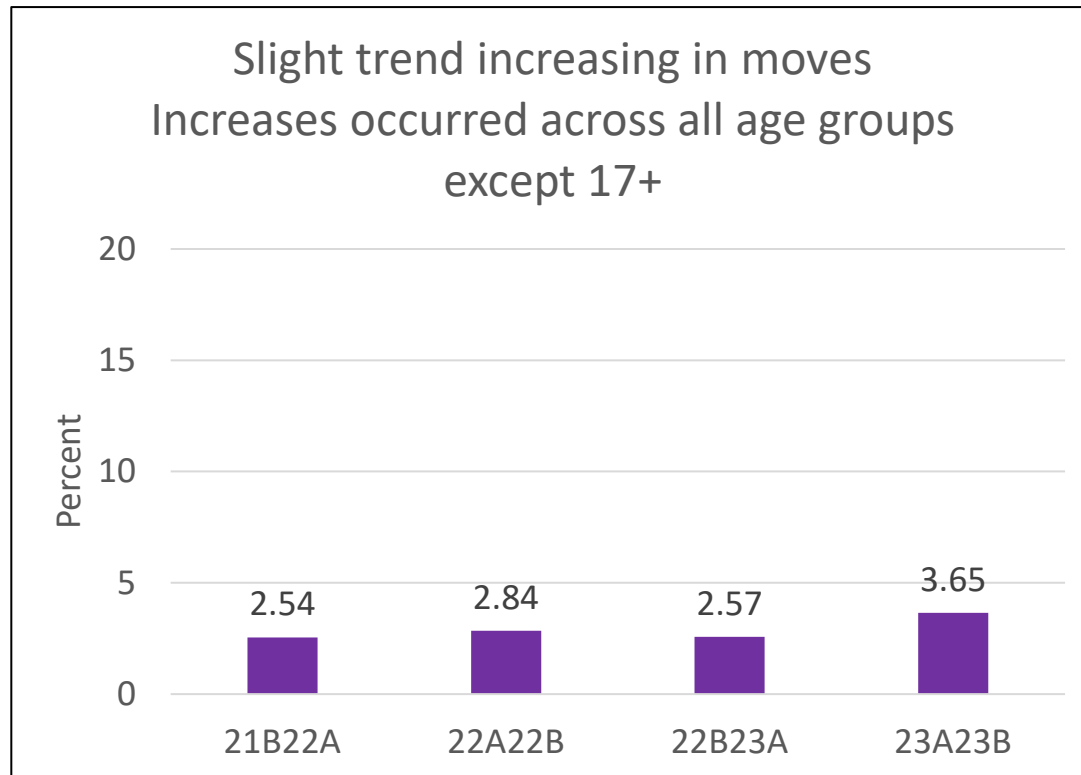


Placement Stability (Moves per 1,000 Days in Foster Care)

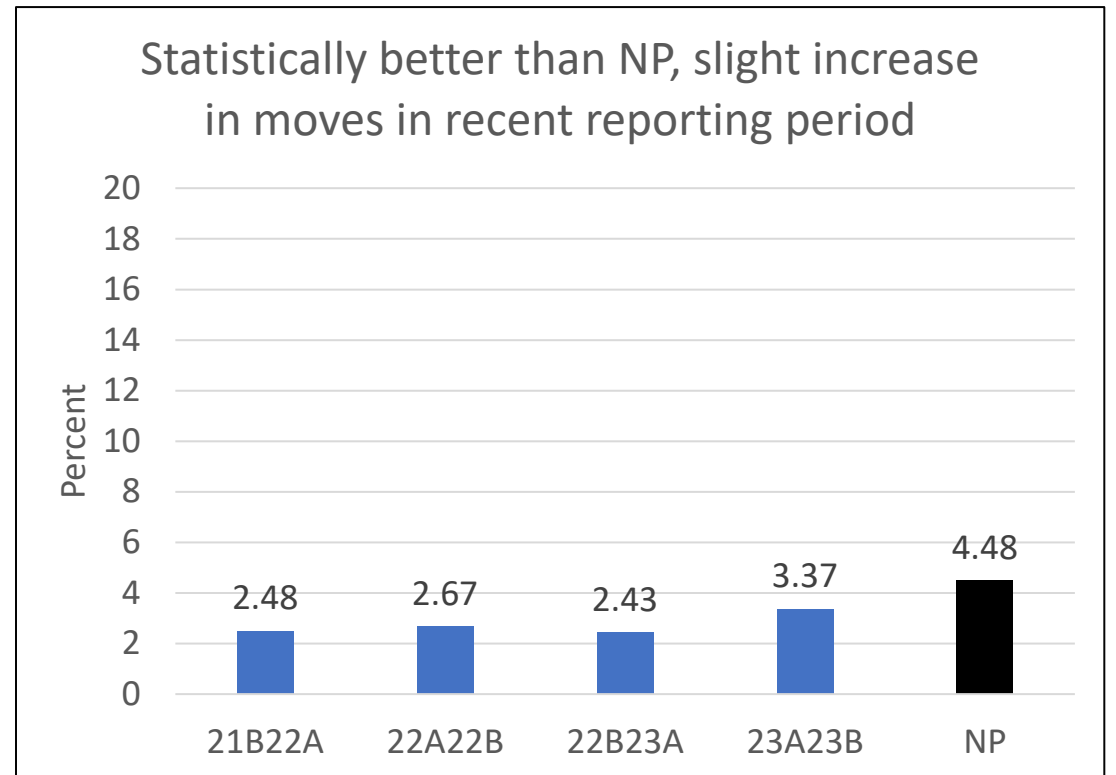
(lower is better)

Blue: State's performance is statistically better than NP
Grey: State's performance is statistically no different than NP
Red: State's performance is statistically worse than NP

Observed

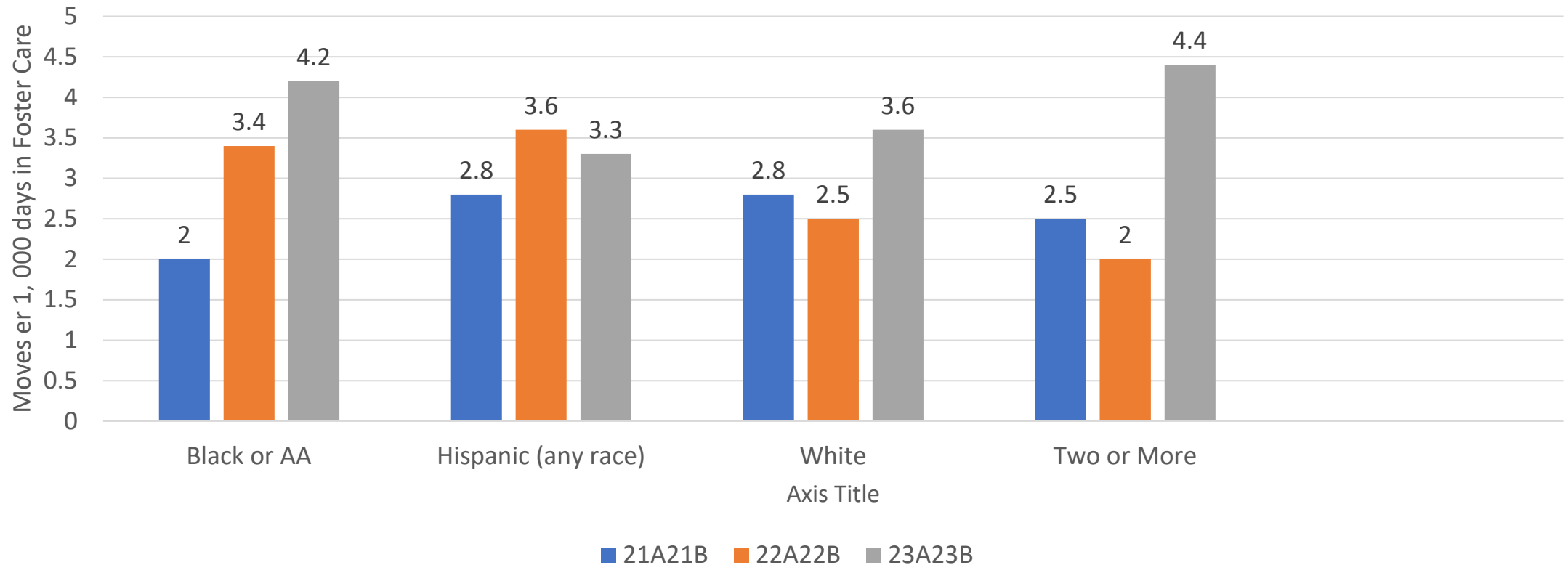


Risk Standardized Performance



Observed Performance on Placement Stability (Moves per 1,000 Days in Foster Care) by Race and Ethnicity and Over Time

Among Race and Ethnicity Groups, all groups increased in the most recent time period except for Hispanic



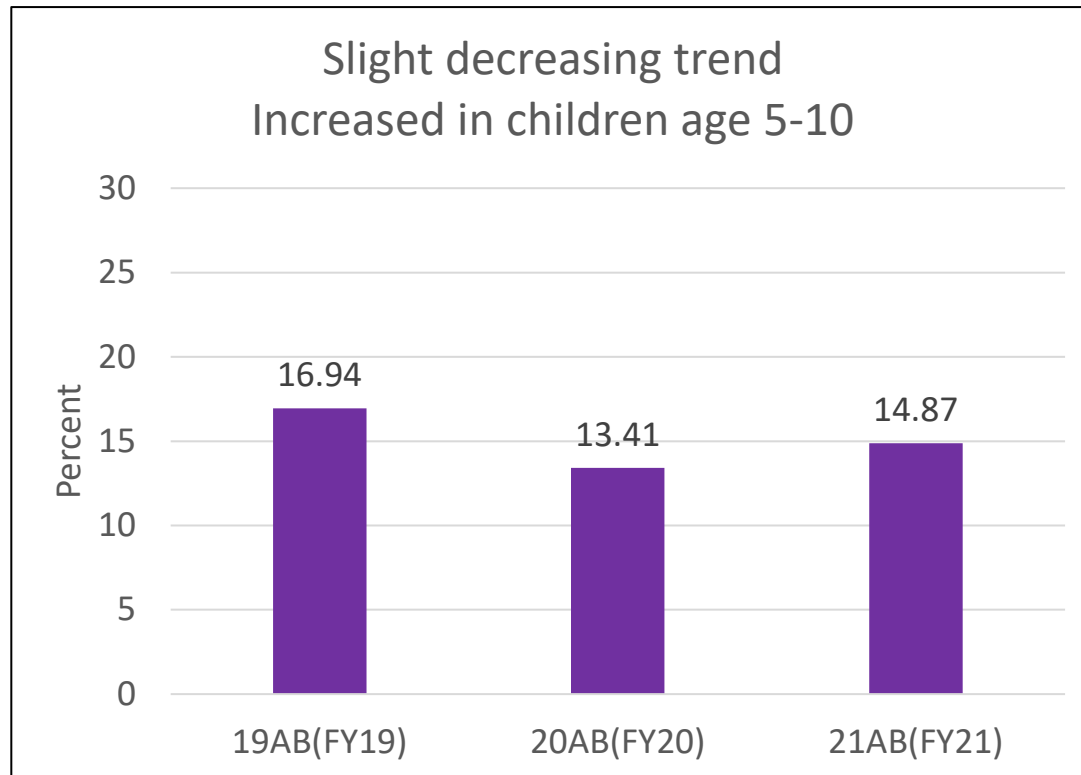
SAFETY INDICATORS



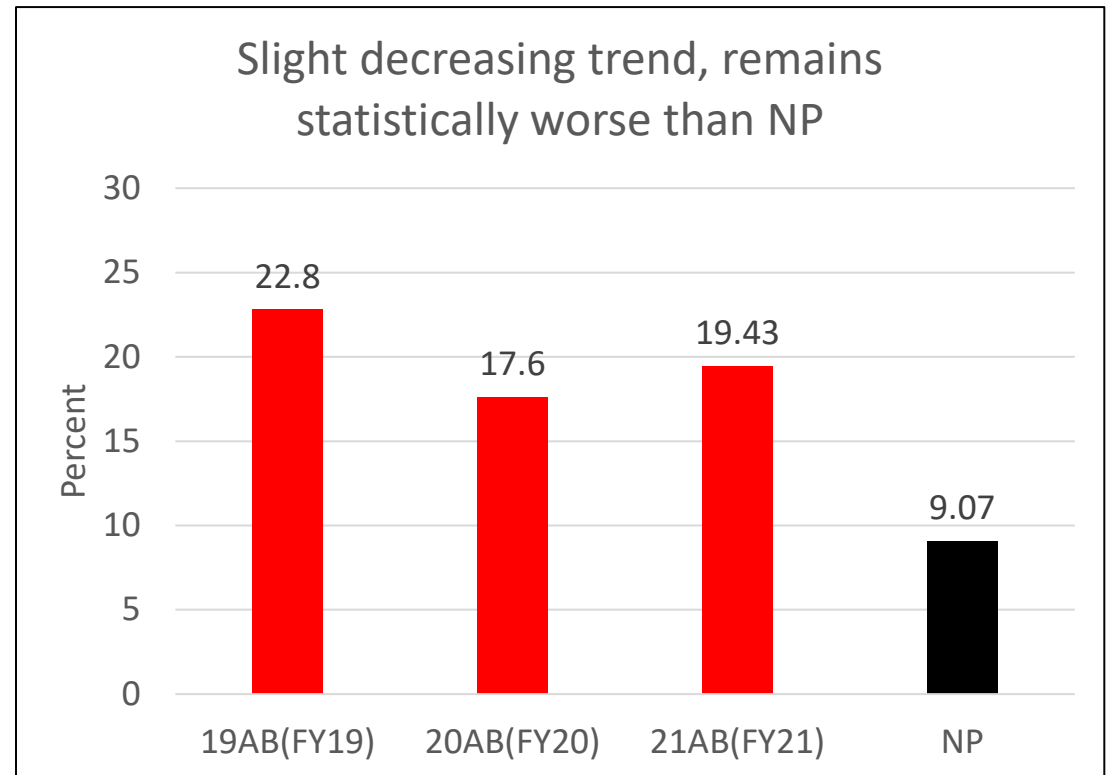
Maltreatment in Foster Care (victimizations per 100,000 days in Foster Care) (lower is better)

Blue: State's performance is statistically better than NP
Grey: State's performance is statistically no different than NP
Red: State's performance is statistically worse than NP

Observed

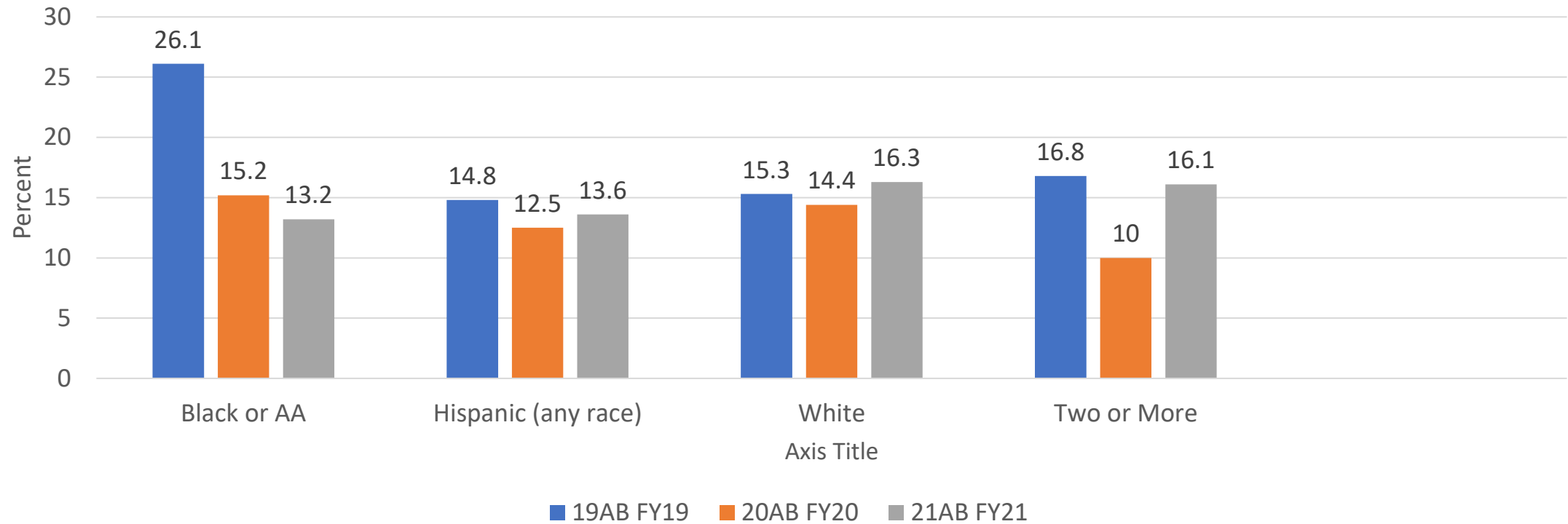


Risk Standardized Performance



Observed Performance on Maltreatment in Foster Care by Race and Ethnicity and Over Time

Among Race and Ethnicity Groups, Black or African American decreased the most over the three time periods and decreased to the lowest percentage in the most recent time period



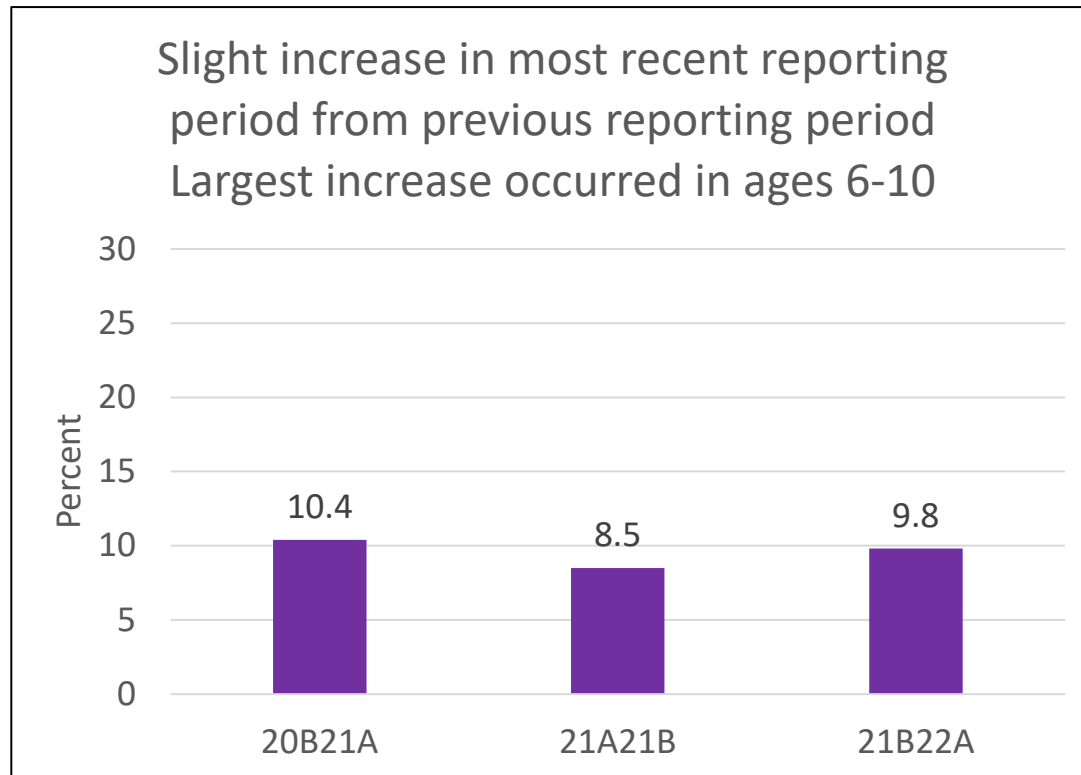
Observed Performance on Maltreatment in Care by Perpetrator Type and Victim Counts, 2021

| Victims counts and percents by perpetrator relationship - 2021 | | |
|--|---------|--------------------|
| Perpetrator relationship type | Victims | % of total victims |
| Total | 106 | 100.0% |
| Father only | 13 | 12.3% |
| Mother only | 15 | 14.2% |
| Two parents of known sex | 16 | 15.1% |
| Multiple perpetrators with at least one parent | 15 | 14.2% |
| Unmarried partner of parent | 0 | 0.0% |
| Legal guardian | 0 | 0.0% |
| Other relative (non foster parent) | 4 | 3.8% |
| Relative foster parent | 7 | 6.6% |
| Nonrelative foster parent | 12 | 11.3% |
| Foster parent, relationship unknown or unspecified | 0 | 0.0% |
| Group home or residential facility staff | 20 | 18.9% |
| Child daycare provider | 1 | 0.9% |
| Other professionals | 0 | 0.0% |
| Friends or neighbors | 0 | 0.0% |
| More than one category of nonparental perpetrator | 1 | 0.9% |
| Other | 2 | 1.9% |
| Unknown or missing | 0 | 0.0% |

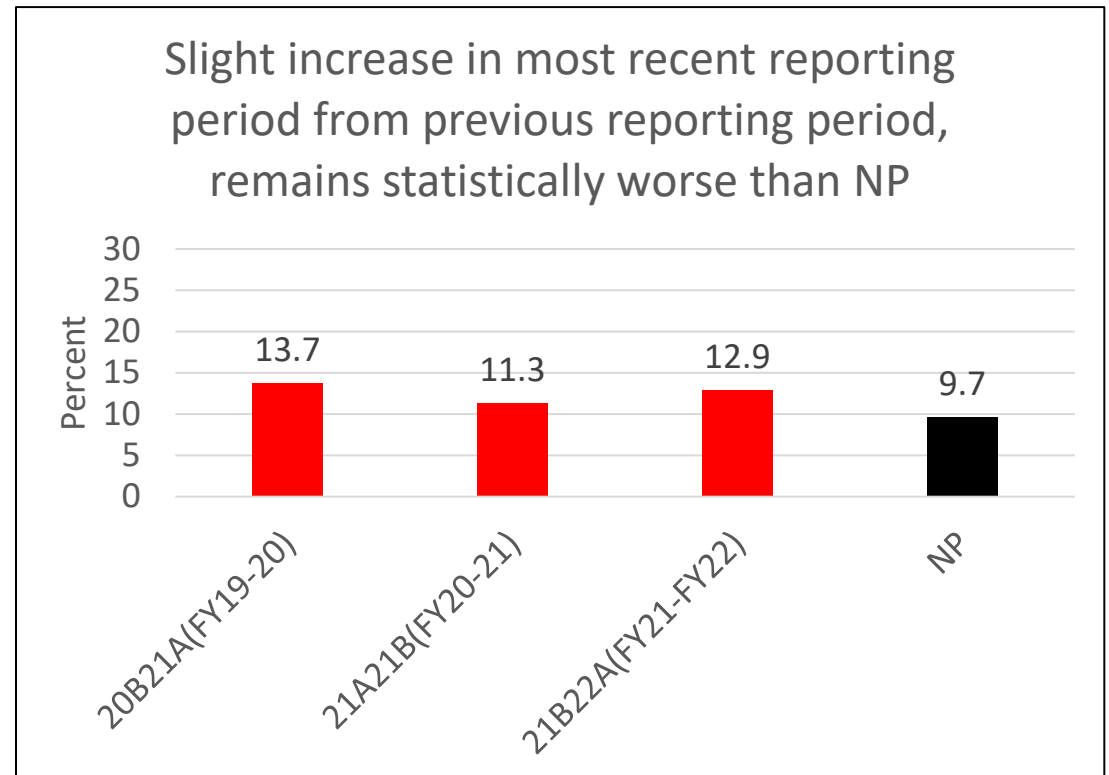
Recurrence of Maltreatment Within 12 Months of Previous Maltreatment (lower is better)

Blue: State's performance is statistically better than NP
 Grey: State's performance is statistically no different than NP
 Red: State's performance is statistically worse than NP

Observed

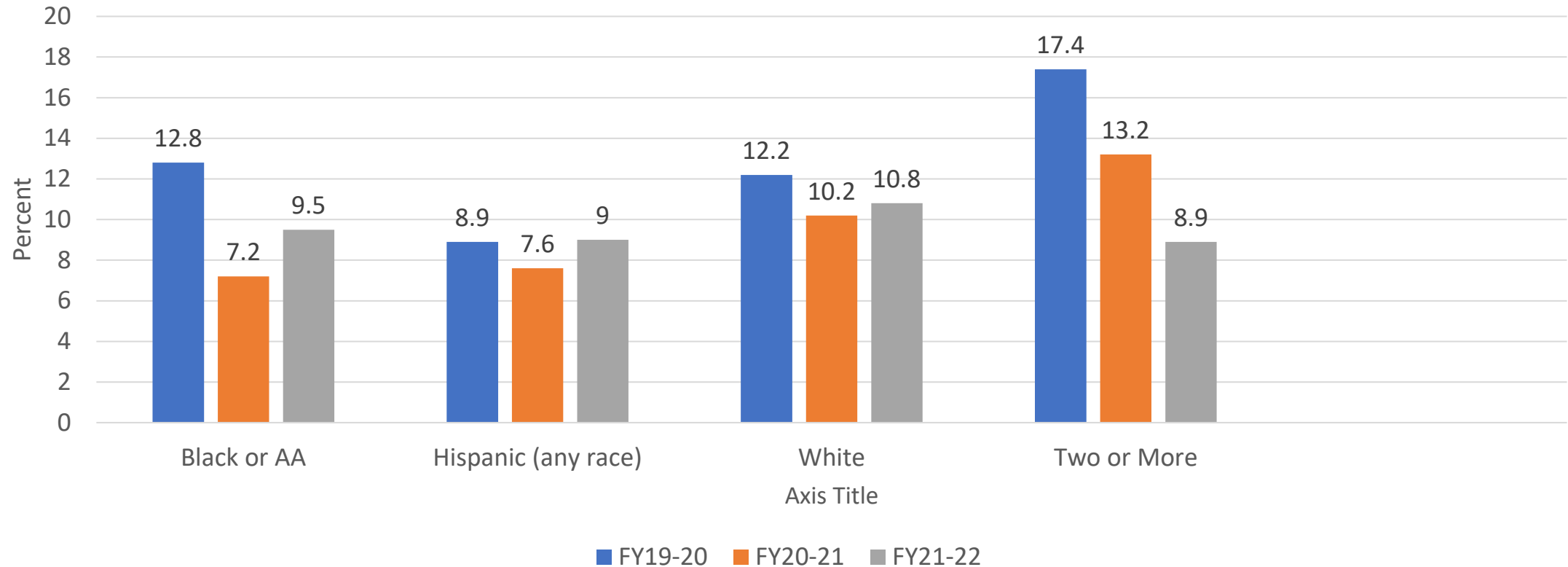


Risk Standardized Performance



Observed Performance on Recurrence of Maltreatment Within 12 Months of Previous Maltreatment by Race and Ethnicity and Over Time

Among Race and Ethnicity Groups, Two or More Races decreased to the lowest percentage in the most recent time period



All 5 Permanency RSP Indicators Will Be Used to Assess Permanency Outcome 1 in Round 4 Child and Family Service Review. Statistically worse than the NP will result in its inclusion into the Program Improvement Plan

- Permanency Achieved Within 12 months (Entry Cohort)
- Permanency Achieved Within 12 months (In Foster Care 12-23 months)
- Permanency Achieved Within 12 months (In Foster Care 24+ months)
- Re-entry Into Foster Care (Out of home placements)
- Placement Stability (Moves per 1,000 days in care)

Two RSP Safety Indicators Will be Used to Assess Safety Outcome 1 in Round 4 Child and Family Service Review. Statistically worse than the NP will result in its inclusion into the Program Improvement Plan

- Maltreatment in Foster Care
- Recurrence of Maltreatment

Vertical toolbar with icons for navigation and editing.

Vertical toolbar with icons for communication and navigation.



Rhode Island
 Child and Family Services Review (CFSR 4) Data Profile
 AFCARS and NCANDS submissions as of 2-20-24

February 2024

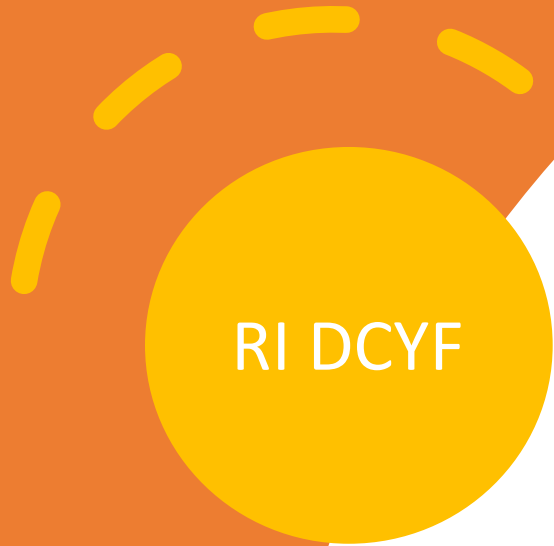
Risk-Standardized Performance

Risk-Standardized Performance (RSP) is the percent or rate of children experiencing the outcome of interest, with risk adjustment. To see how your state is performing relative to the national performance (NP), compare the RSP interval to the NP for the indicator. See the footnotes for more information on interpreting performance.

| | | National Performance | 19A19B | 19B20A | 20A20B | 20B21A | 21A21B | 21B22A | 22A22B | 22B23A | 23A23B |
|--|---------|----------------------|--------------------------|--------------------------|--------------------------|--------------------------|--------------------------|--------------------------|--------------------------|--------------------------|--------------------------|
| Permanency in 12 months (entries) | | RSP | 29.2% | 28.4% | 30.1% | 31.9% | 32.0% | 30.6% | | | |
| | 35.2% ▲ | RSP interval | 26.7%-31.8% ³ | 25.9%-31.1% ³ | 27.2%-33.2% ³ | 28.7%-35.3% ² | 28.8%-35.3% ² | 27.5%-33.8% ³ | | | |
| | | Data used | 19A-21A | 19B-21B | 20A-22A | 20B-22B | 21A-23A | 21B-23B | | | |
| Permanency in 12 months (12-23 mos) | | RSP | | | | 38.4% | 45.2% | 44.9% | 48.7% | 50.9% | 52.6% |
| | 43.8% ▲ | RSP interval | | | | 34.8%-42.2% ³ | 41.5%-49.0% ² | 41.1%-48.8% ² | 44.4%-53.1% ¹ | 46.2%-55.7% ¹ | 47.9%-57.2% ¹ |
| | | Data used | | | | 20B-21A | 21A-21B | 21B-22A | 22A-22B | 22B-23A | 23A-23B |
| Permanency in 12 months (24+ mos) | | RSP | | | | 31.6% | 40.4% | 41.4% | 40.4% | 45.1% | 42.1% |
| | 37.3% ▲ | RSP interval | | | | 28.3%-35.1% ³ | 37.3%-43.5% ² | 38.2%-44.6% ¹ | 37.2%-43.7% ² | 41.6%-48.7% ¹ | 38.1%-46.2% ¹ |
| | | Data used | | | | 20B-21A | 21A-21B | 21B-22A | 22A-22B | 22B-23A | 23A-23B |
| Reentry to foster care | | RSP | | 5.1% | 5.3% | 4.8% | 4.2% | 4.1% | 6.4% | | |
| | 5.6% ▼ | RSP interval | | 3.7%-7.1% ² | 3.8%-7.2% ² | 3.5%-6.6% ² | 3.0%-5.8% ² | 2.8%-5.8% ² | 4.7%-8.7% ² | | |
| | | Data used | | 19B-21A | 20A-21B | 20B-22A | 21A-22B | 21B-23A | 22A-23B | | |
| Placement stability (moves/1,000 days in care) | | RSP | | | | 2.31 | 2.61 | 2.48 | 2.67 | 2.43 | 3.37 |
| | 4.48 ▼ | RSP interval | | | | 2.06-2.59 ¹ | 2.36-2.9 ¹ | 2.24-2.75 ¹ | 2.43-2.95 ¹ | 2.2-2.68 ¹ | 3.07-3.68 ¹ |
| | | Data used | | | | 20B-21A | 21A-21B | 21B-22A | 22A-22B | 22B-23A | 23A-23B |
| Maltreatment in care (victimizations/100,000 days in care) | | RSP | 22.28 | 17.60 | 19.43 | | | | | | |
| | 9.07 ▼ | RSP interval | 18.73-26.51 ³ | 14.57-21.25 ³ | 16.07-23.49 ³ | | | | | | |
| | | Data used | 19A-19B, FY19-20 | 20A-20B, FY20-21 | 21A-21B, FY21-22 | | | | | | |
| Recurrence of maltreatment | | RSP | | | | 13.7% | 11.3% | 12.9% | | | |
| | 9.7% ▼ | RSP interval | | | | 12.4%-15.1% ³ | 9.9%-12.7% ³ | 11.4%-14.5% ³ | | | |
| | | Data used | | | | FY19-20 | FY20-21 | FY21-22 | | | |

- Performance Key**
- ¹ State's performance (using RSP interval) is statistically better than national performance.
 - ² State's performance (using RSP interval) is statistically no different than national performance.
 - ³ State's performance (using RSP interval) is statistically worse than national performance.
- DQ Performance was not calculated due to exceeding the data quality limit on one or more data quality (DQ) checks done for the indicator. See footnotes for more information.

▲ For this indicator, a higher RSP value is desirable. ▼ For this indicator, a lower RSP value is desirable.



Thank you!